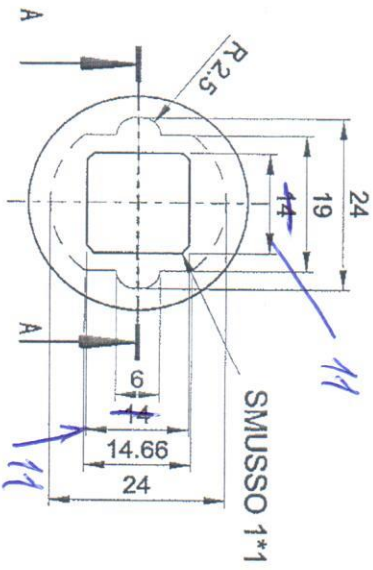
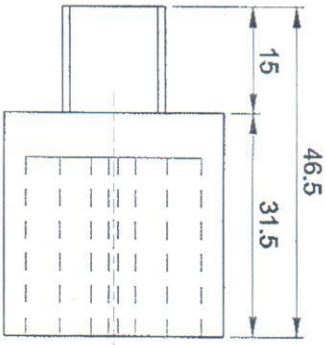
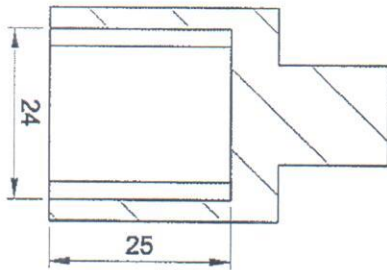
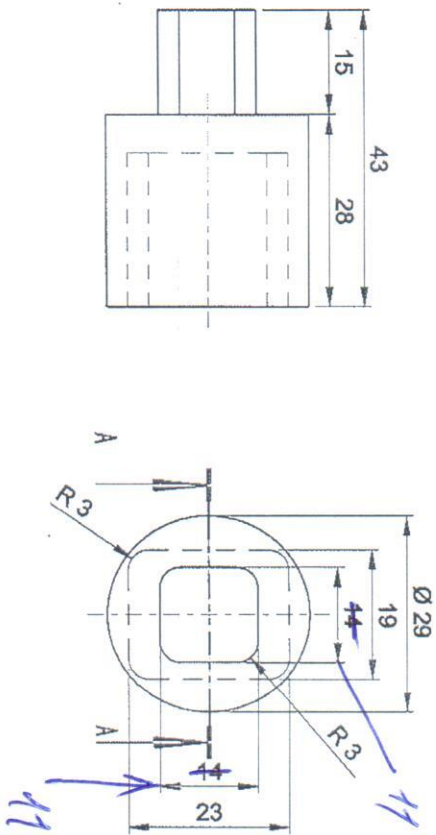
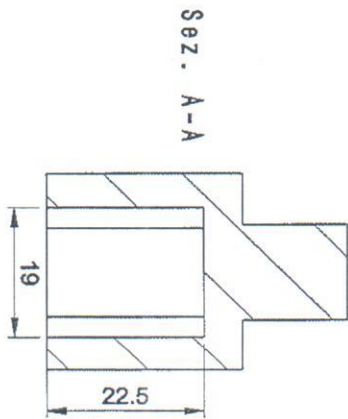


Sez. A-A



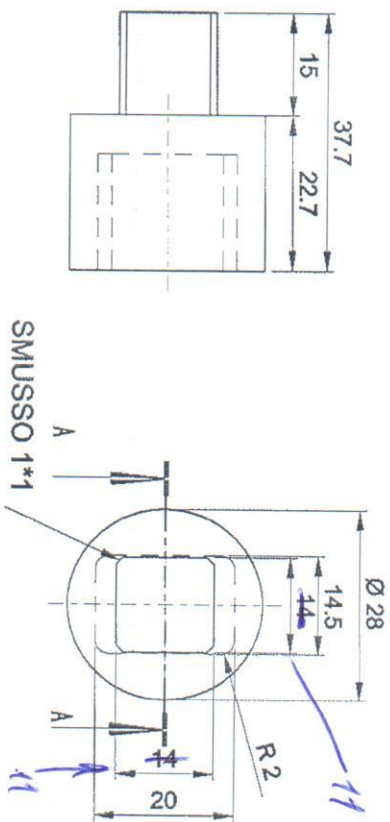
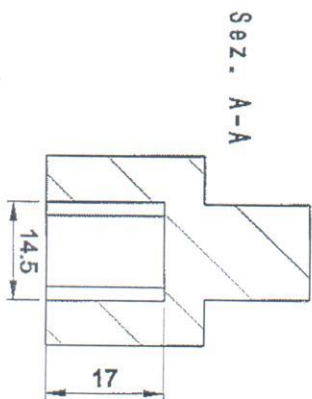
BV175
negherog
14 = 11
Bucemmo

INNESTI MOTORE VALVOLA 75
SCALA 1:1
23/11/2017



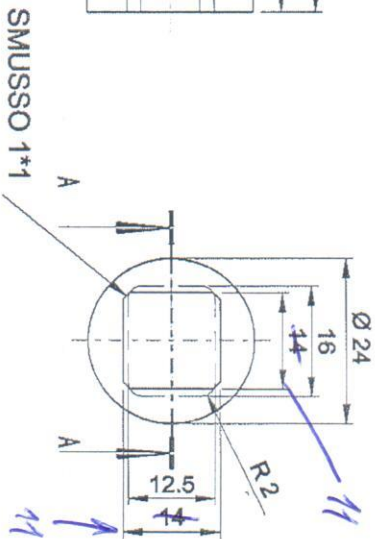
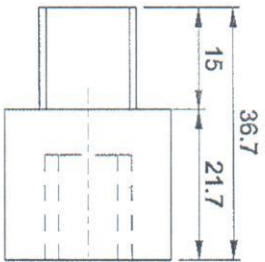
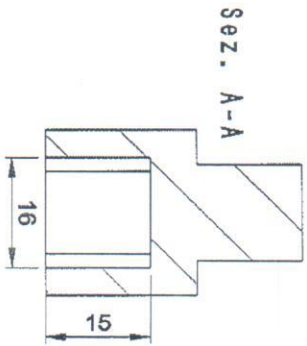
BV163 14=11

INNESTI MOTORE VALVOLA 63
 SCALA 1:1
 23/11/2017



BV 50 14 = 11

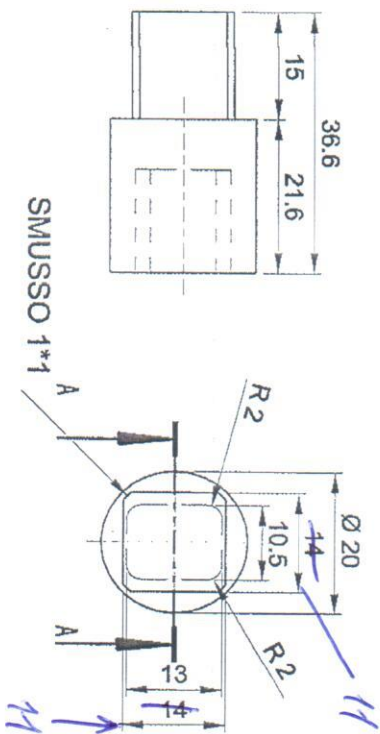
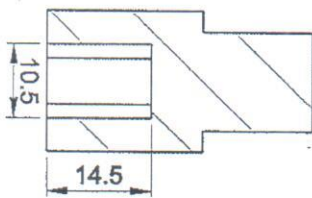
INNESTI MOTORE VALVOLA 50
 SCALA 1:1
 23/11/2017



BM40 14=11

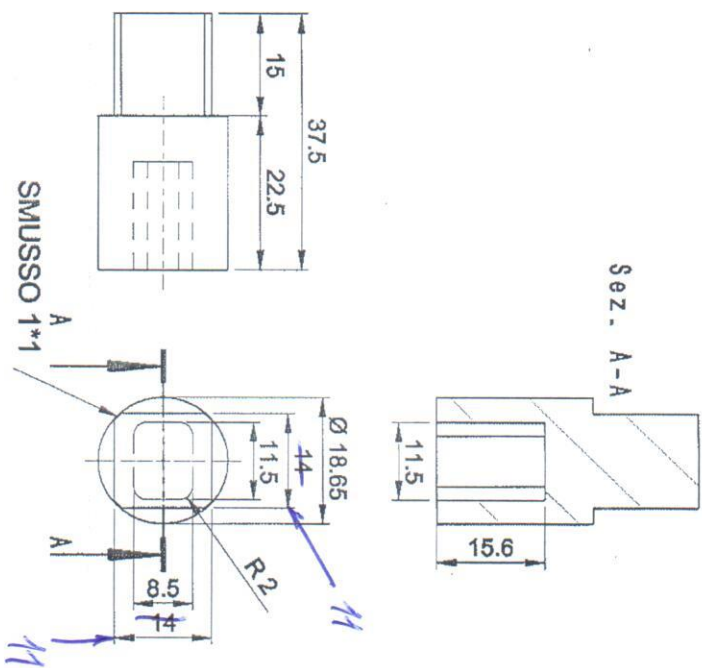
INNESTI MOTORE VALVOLA 40
 SCALA 1:1
 23/11/2017

Sez. A-A



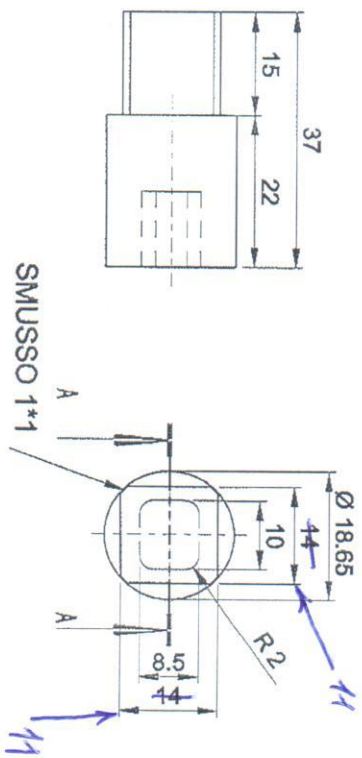
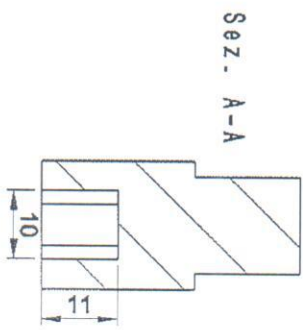
BV1 32 14 = 11

INNESTI MOTORE VALVOLA 32
SCALA 1:1
23/11/2017



BV125 84=11

INNESTI MOTORE VALVOLA 25
 SCALA 1:1
 23/11/2017



BV120 14=11

INNESTI MOTORE VALVOLA 20
 SCALA 1:1
 23/11/2017