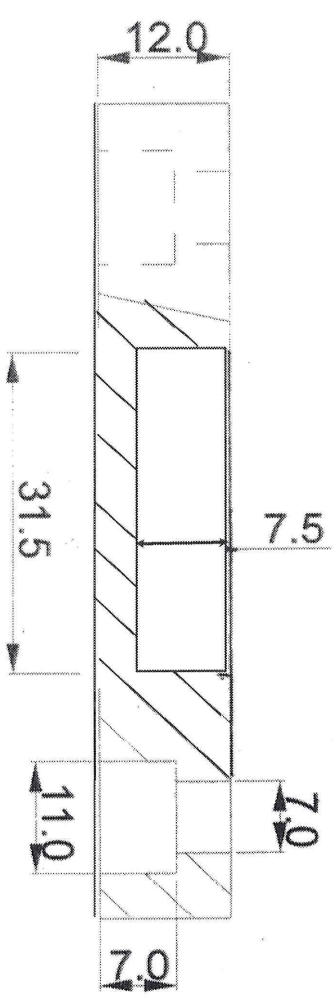
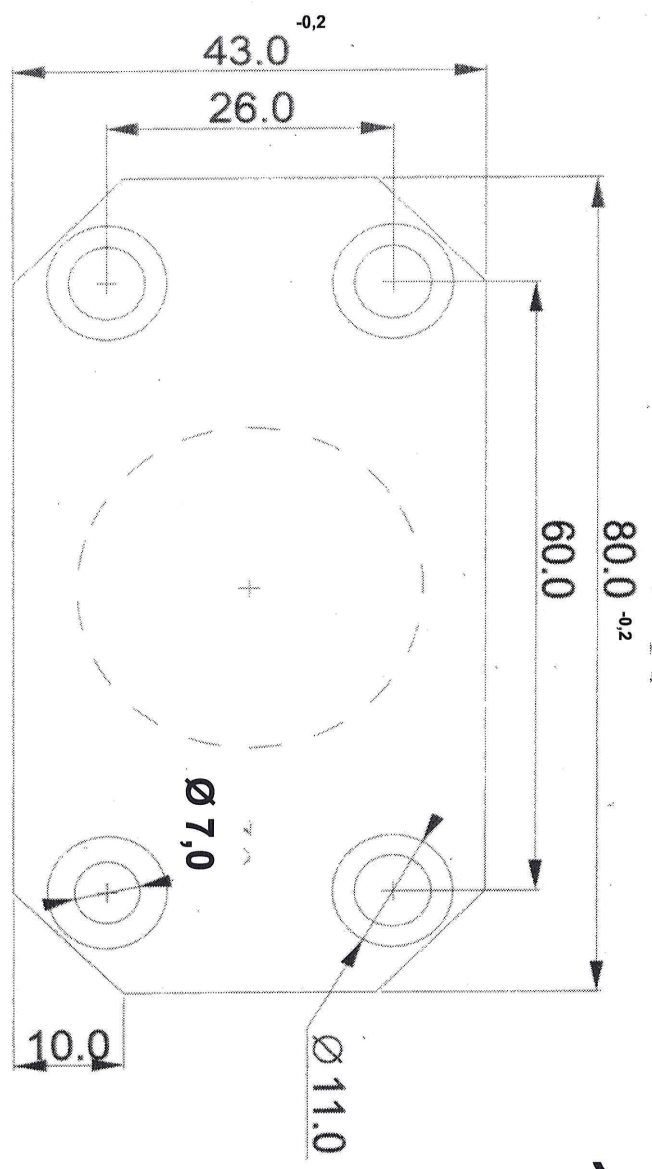


Mat.
16MnCr5
1.7131



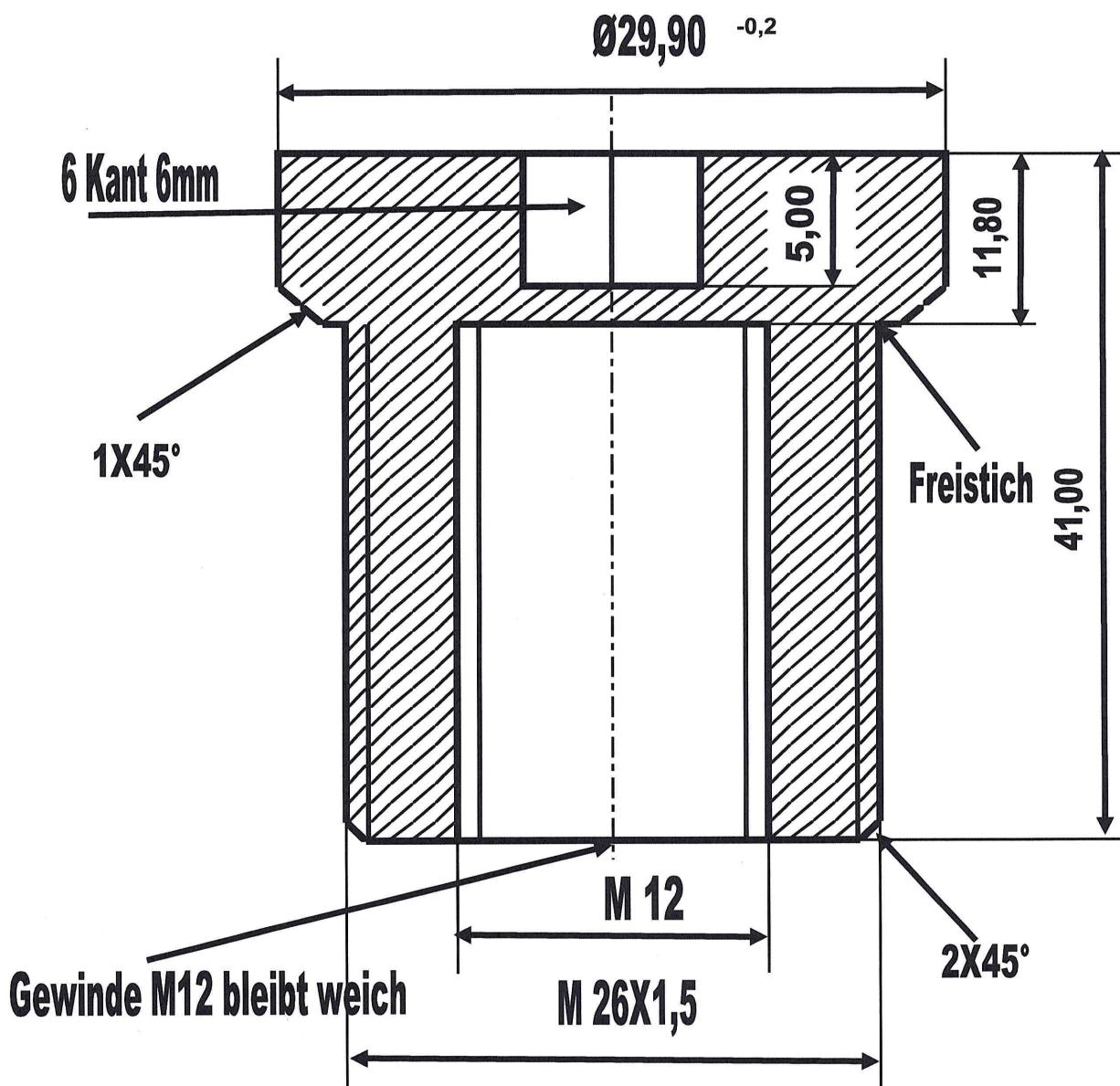
Martin Kahl
4373
Tel. 2432

08/1521

JULEX
MASCHINENBAU
Postfach 101320 · D-47713 Krefeld
Tel. 02151/37001 · Fax 391515

Teil 4
24 Stück

Teil 5



0,8 E+H

58 HRC

Mat. 16MnCr5

1.7131

48 Stück

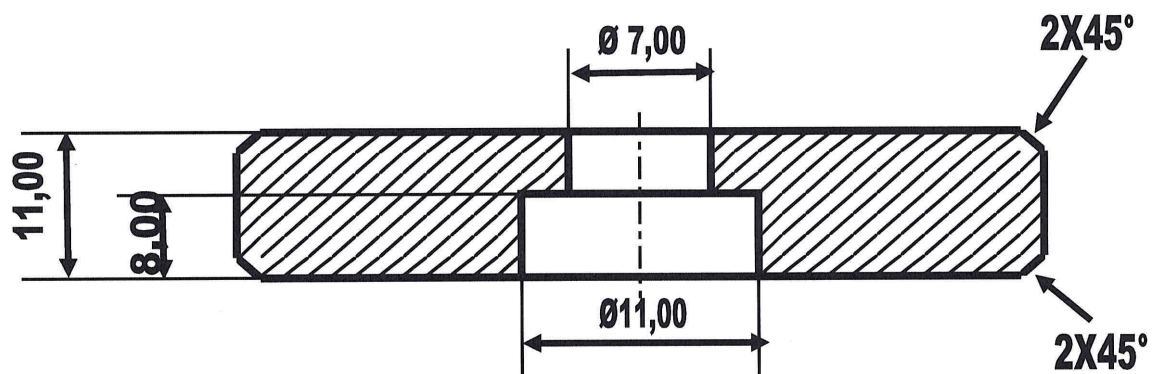
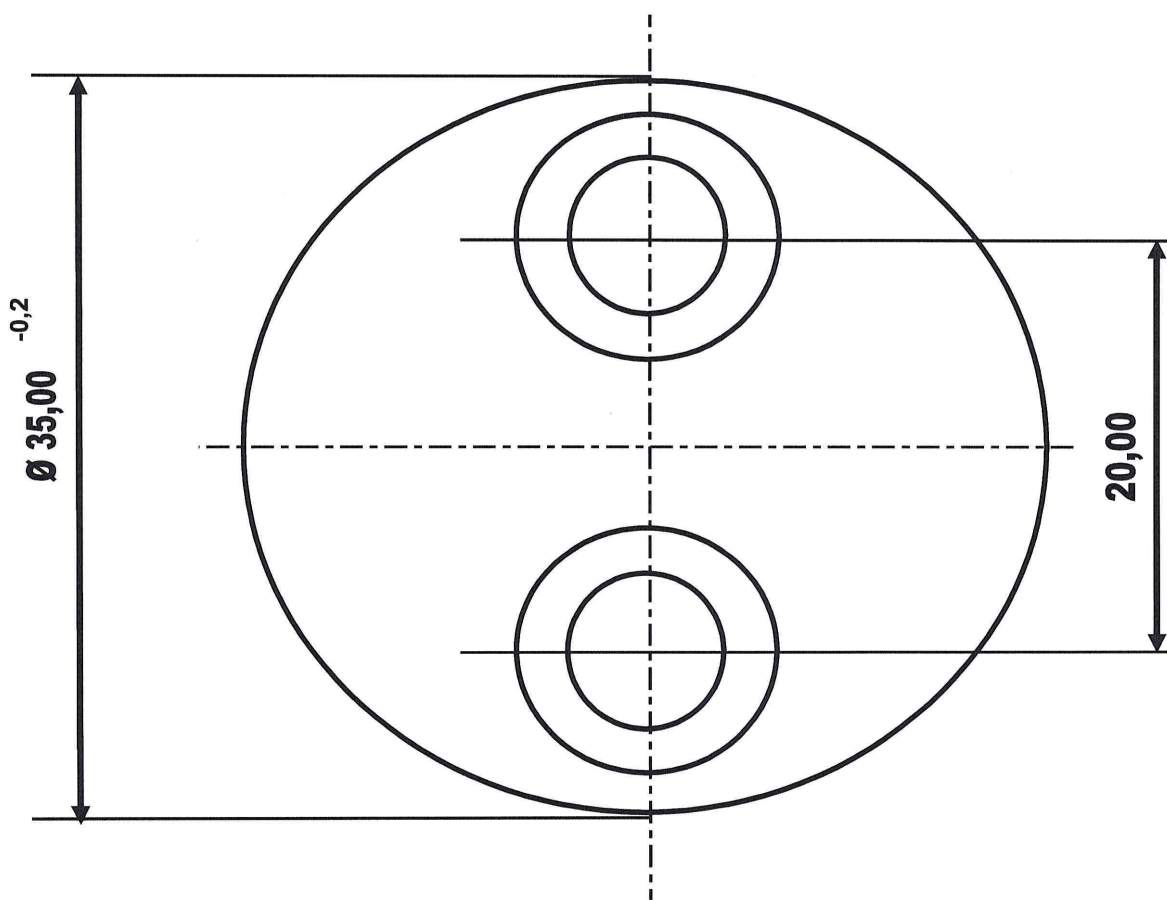
JÜLEX
MASCHINENBAU

Postfach 101320 · D-47713 Krefeld
Tel. 02151/37001 · Fax 391515

Martin Kahl Abt. 4373

08/1571

Teil 6



48 Stück

0,8 E+H

58 HRC

Mat. 16MnCr5

1.7131

JÜLEX
MASCHINENBAU

Postfach 101320 · D-47713 Krefeld
Tel. 02151/37001 · Fax 391515

Martin Kahl Abt. 4373

08/1571