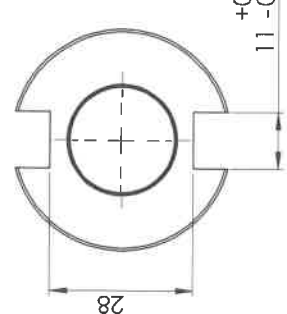
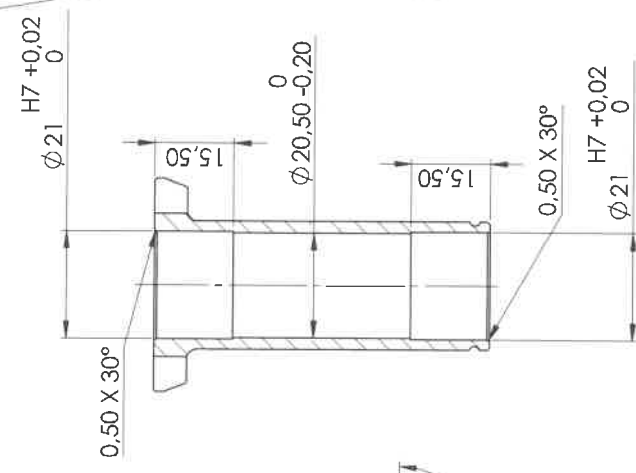
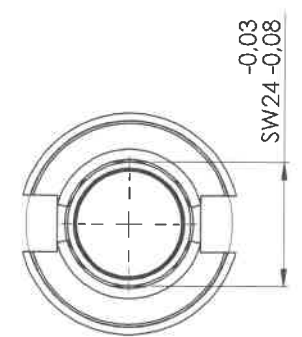
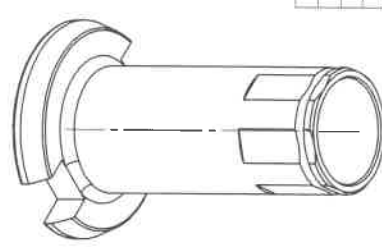


**bevels 0,5X45°
Fasen 0,5X45°
gasnitrided-Gasnitriert
hardening depth 0,05 +0,1
Einhärtetiefe 0,05 +0,1**



SCHNITT A-A Section

All rights reserved.
Without prior agreement,
it's not allowed to duplicate
or to impart to a third party,
any part of this drawing,
even if it is only partially.
Dimensions without tolerance
according to
DIN ISO 2768 T1m/7K

Material / material	16MnCr5 1.7139
Designation / name	Freilaufachse - freewheel axle Bremsfreilauf - Brake release
Technical Drawing no.	BRF0202d
Drawn by	eretz.d
Scale	1/1

Art-Nr.:	
Bohr-Nr.:	
Verzahnung-Nr.:	
GM-Nr.:	
Sanitär-Lock-Nr.:	
Hand-Nr.:	
Gewicht:	11,57 gr
Artikelnummer	
Prüfmaß:	
Größmaß:	
Kleinmaß:	
Übertragungshöhe:	

Vergleichshöhe für Oberflächenangabe	DIN 3141	▽	12,5	▽	3,2	▽	0,8	▽	0,1
	DIN ISO 302	▽		▽		▽		▽	
Revis.:	04.02.2010	Name:	M. Evers						
Gepr.:									
Norm:									
Maßst.:	1:1								
Änderung	Datum	Name							
d	1.02.2019	C.G.							
c	07.03.2017	C.G.							