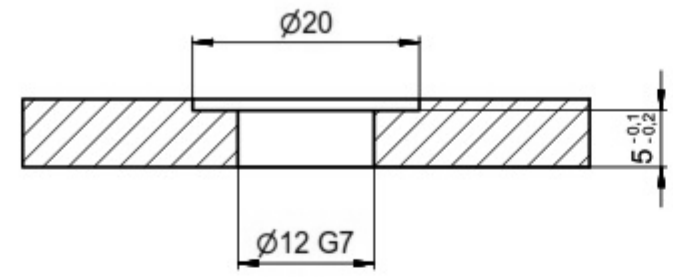
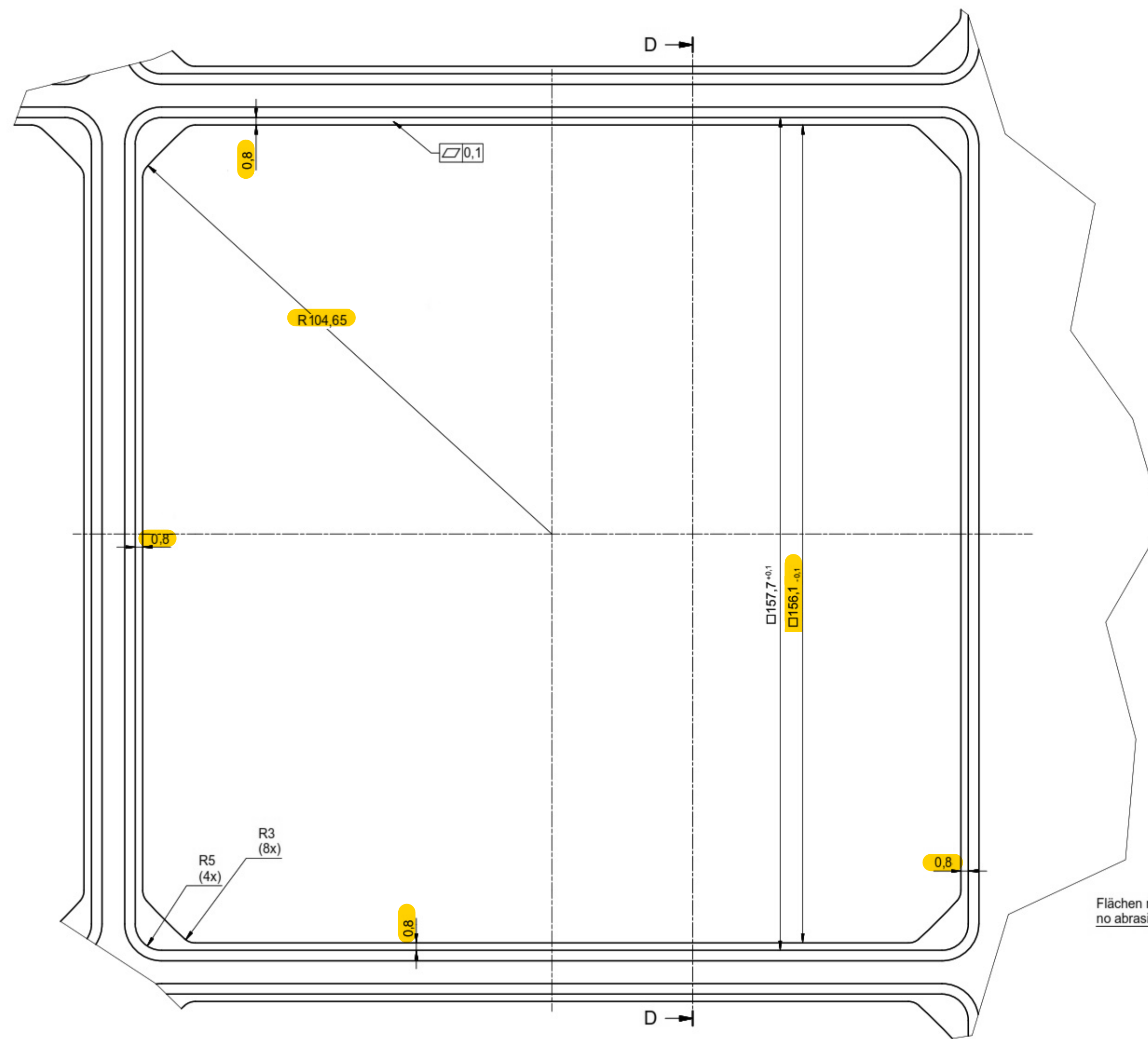


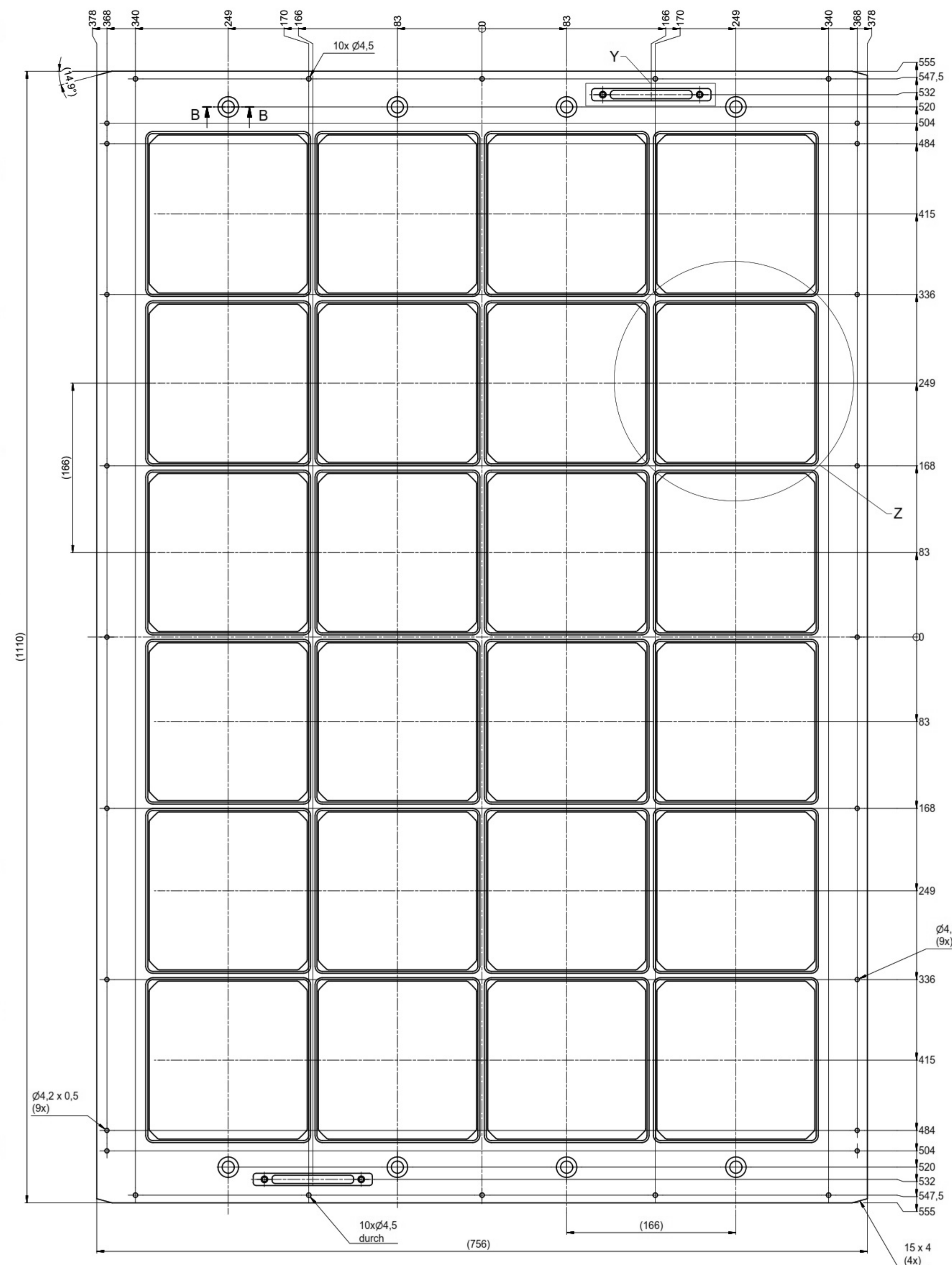
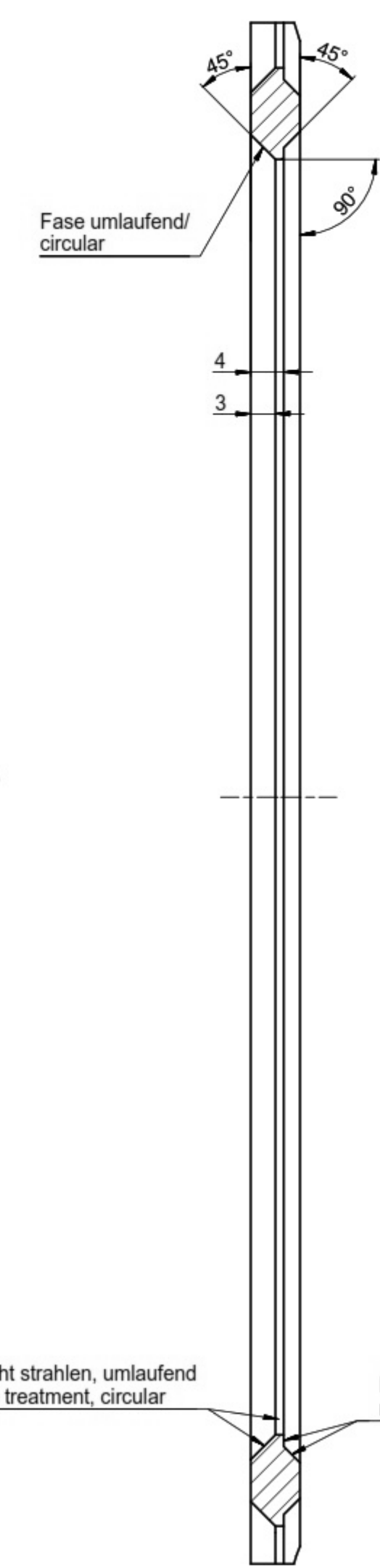
B-B (2:1)



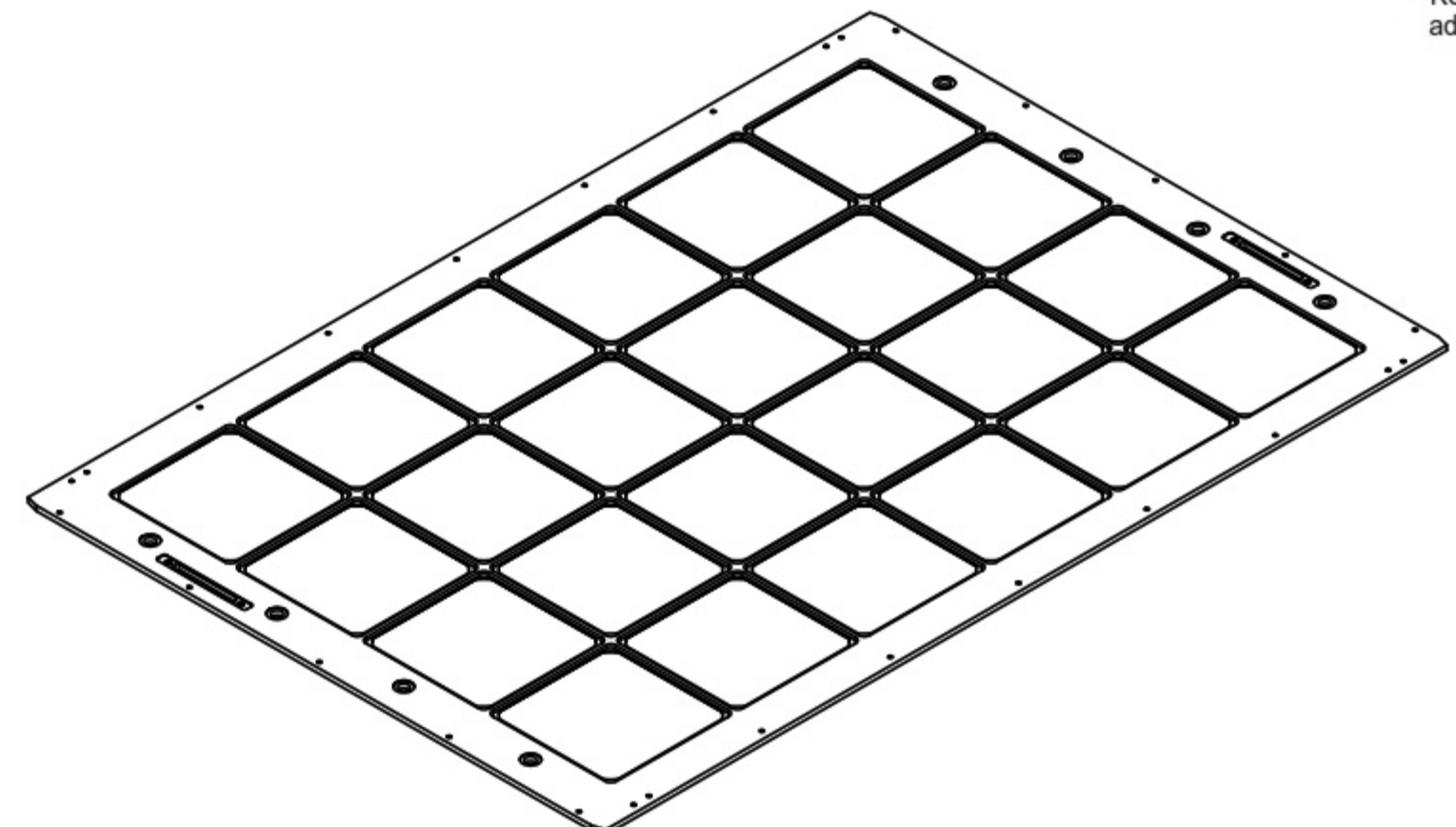
Z (2:1)
24x



D-D (2:1)



ISO (1:5)

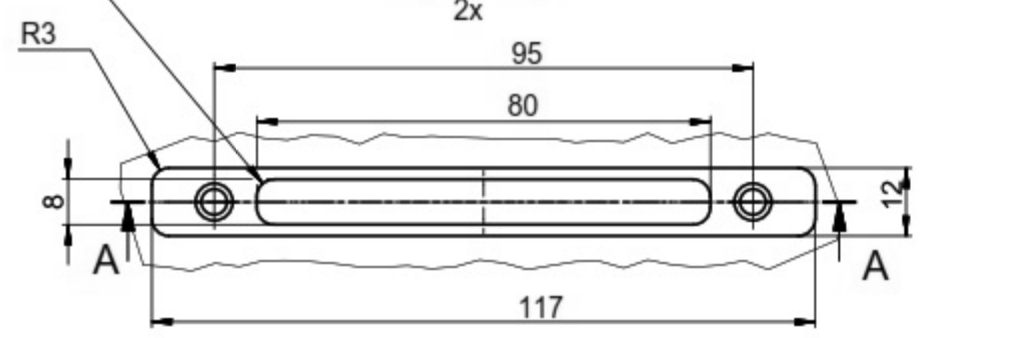


sign.: 15026718-01
+Kreditoren-Nr./vendor-no.
- Kennzeichnung auf der Verpackung anbringen/
add the identification on the packaging

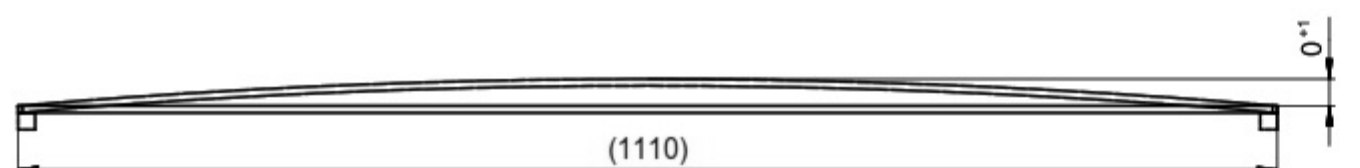
A-A (1:1)



Y (1:1)
2x



P (1:5)
Durchhang / catenary sag



- HV1 - gereinigt gemäß/
cleaned according to
RR-N-002
 - Oberfläche strahlen mit Edelkorund außer gekennzeichnete Flächen
Körnung F 036 / Hauptkornbereich 425µm - 600µm
 - abrasive treatment of the surface with White Fused Alumina except designated areas
size F 036 / average grain size 425µm - 600µm
- Toleranz für nicht tolerierte Längenmaße: $\pm 0,1$ mm
tolerance for non-toleranced length
measures: $\pm 0,1$ mm
- Platte Wafer benötigt Vorspannung um Durchhängen zu vermeiden!!
plate wafer needs pretension to avoid catenary sag!!

Edgemaß ISO13715	General tolerances DIN ISO 13715 EN ISO 13715	Surface condition Material: 1.4301 X5CrNi18-10 Sampled product	Scale: 1:2	Weight: 11.4 kg
<p>CONFIDENTIAL</p> <p>This document contains proprietary information of Meyer Burger AG. Any reproduction, disclosure or distribution of this document and its contents to third parties without written consent of Meyer Burger AG is prohibited.</p>	Date: 30.03.2017 Name: Carsten Hees	<p>Platte Wafer M2+(4x6) plate wafer M2+(4x6) Wafer M2+</p>	<p>ISO 0.2 Lagetoleranz für Bohrungen Positional tolerance for bores</p>	<p>Order no.: 15026718</p>