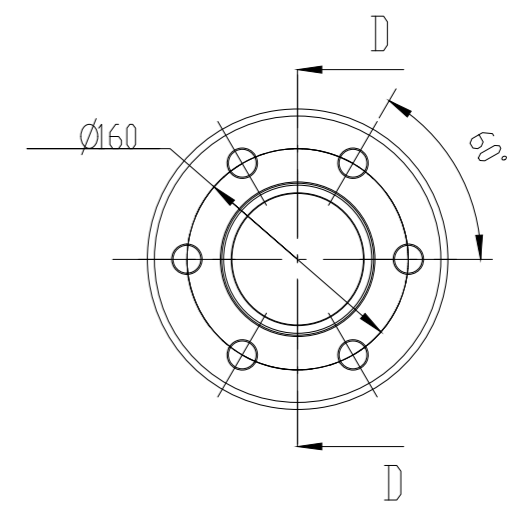
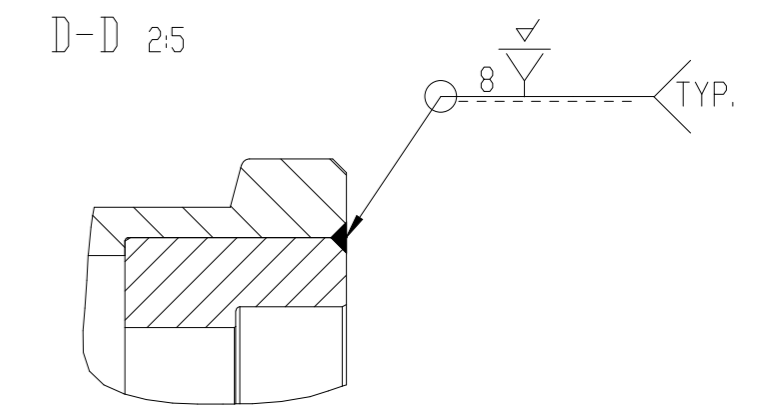


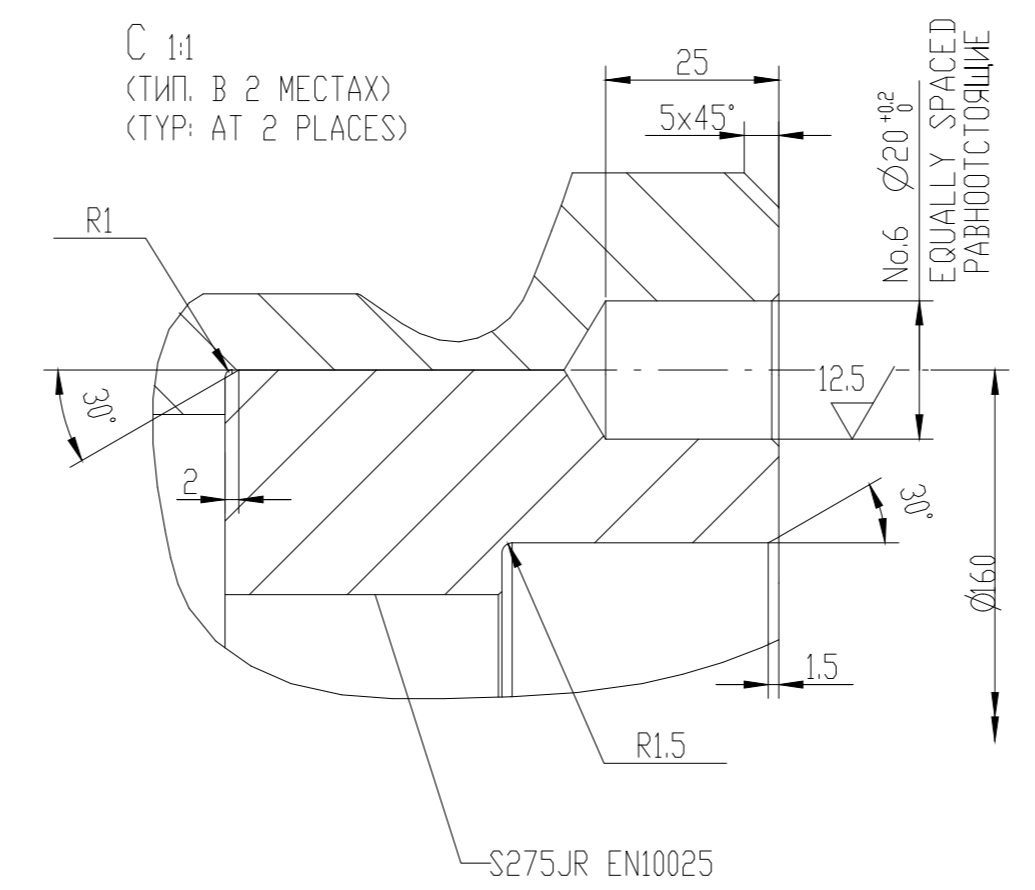
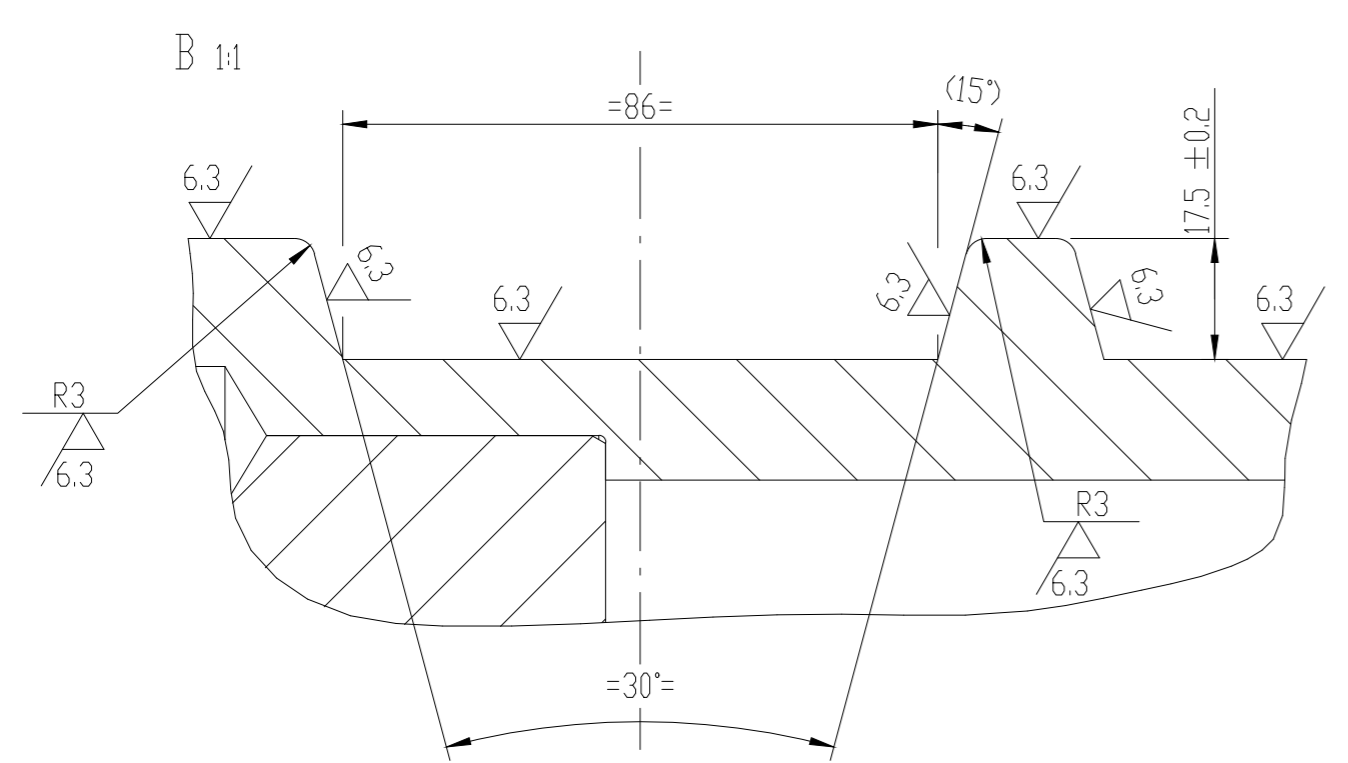
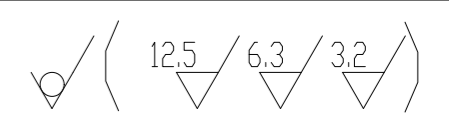
МАРКИРОВАТЬ/TO MARK
8У (80x40) ГОСТ 8240-97
8Y (80x40) GOST 8240-97

ПОЛУЧИТЬ ИЗ ТРУБЫ Ø219.1x36 DIN EN 10220
Fe 45-1 UNI663
OBTAIN FROM PIPE Ø219.1x36 DIN EN 10220
Fe 45-1 UNI663



ЗА ИСКЛЮЧЕНИЕМ ИНЫХ УКАЗАНИЙ:
СКОШЕНИЕ ОСТРОЙ КРОМКИ - 1x45°
РАДИУС ОТКОСА - 0.5

EXCEPT DIFFERENT INSTRUCTION
SHARP EDGES CHAMFER = 1x45°
SHOULDER RADIUS = 0.5



Fertigungsvorschriften Manufacturing Instructions SN 200		Ursprung / Origin		Fertig Gewicht Finished weight 151.8 kg		Modell-Nr. Pattern No.	
Letzte Änderung / Last Revision		Werkstoff / Material СМ. ЧЕРТЕЖ SEE DRAWING		Projektionsmethode 1 ISO 128 First angle projection method			
		Datum Date 05/02/16		Name KUMARGAJ		Maßstab Scale 1:5	
		Geprüft Checked		Typ Type ROLL FOR CHANNEL BY GOST 8240-97		Blatt Sheet	
		Norm Stand		Sach-Nr. / Drawing No. 87.014.11-404.03		Blätter Sheets	
Ausgabe Issue		Änderung Revision		Datum Date		Ersatz für / Supersedes Ersatz durch / Superseded by:	
				None		SMS group	
						Date: 87_014_11-404_03	