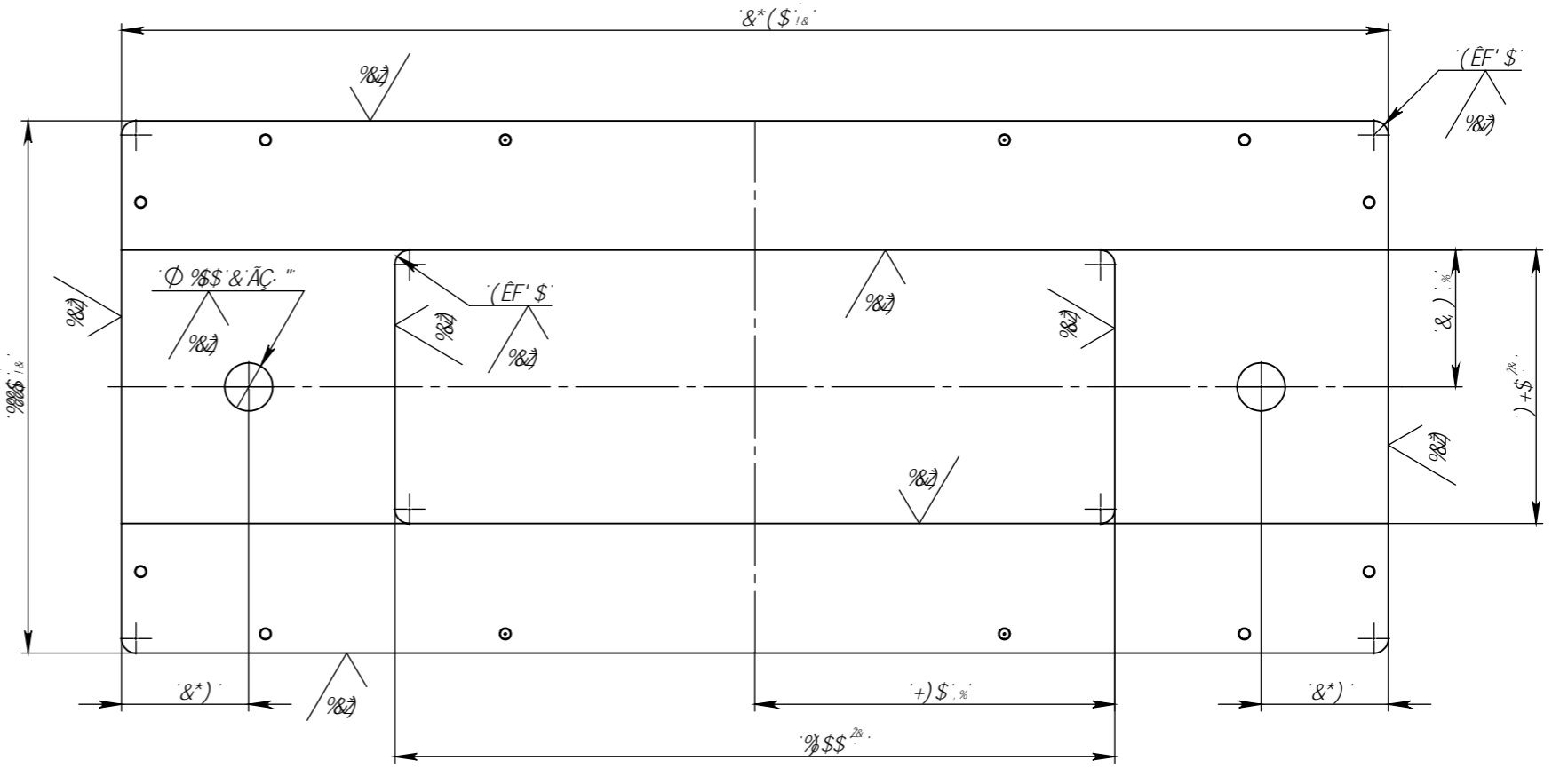
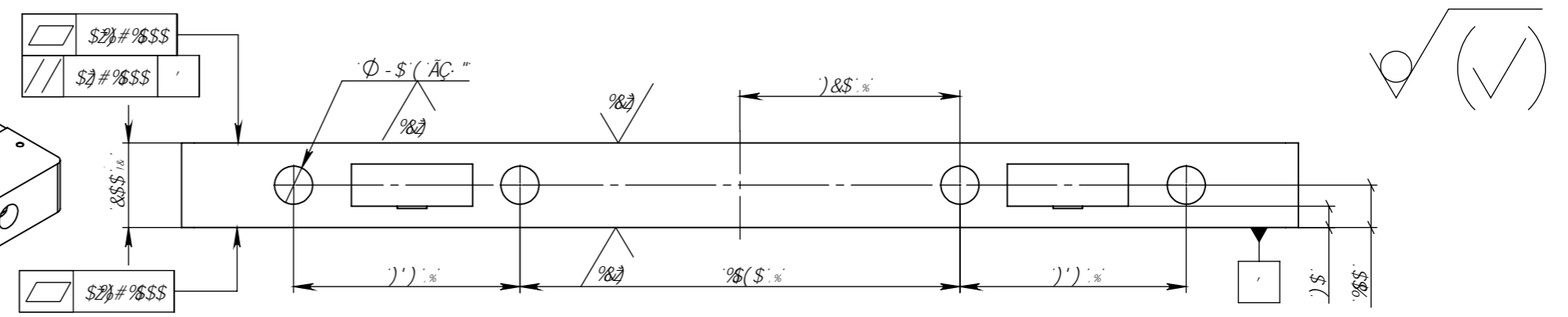
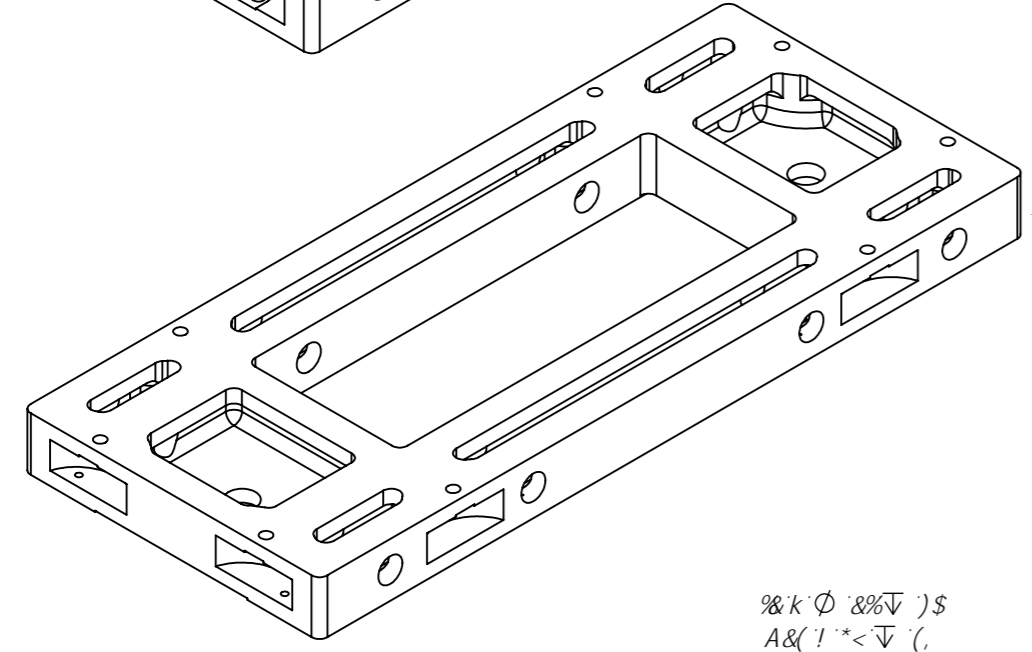
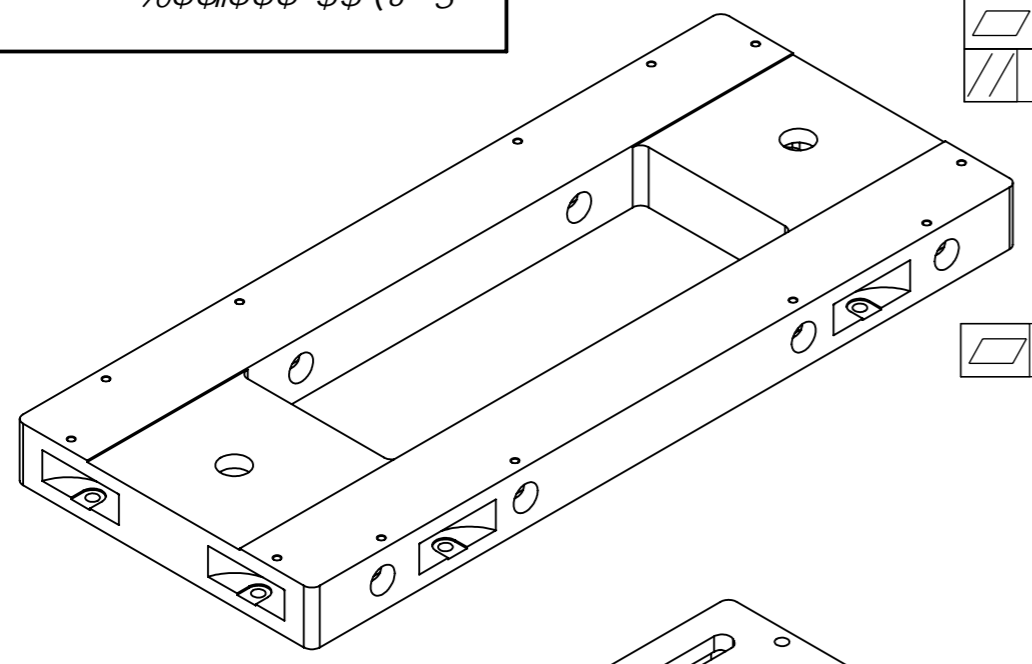
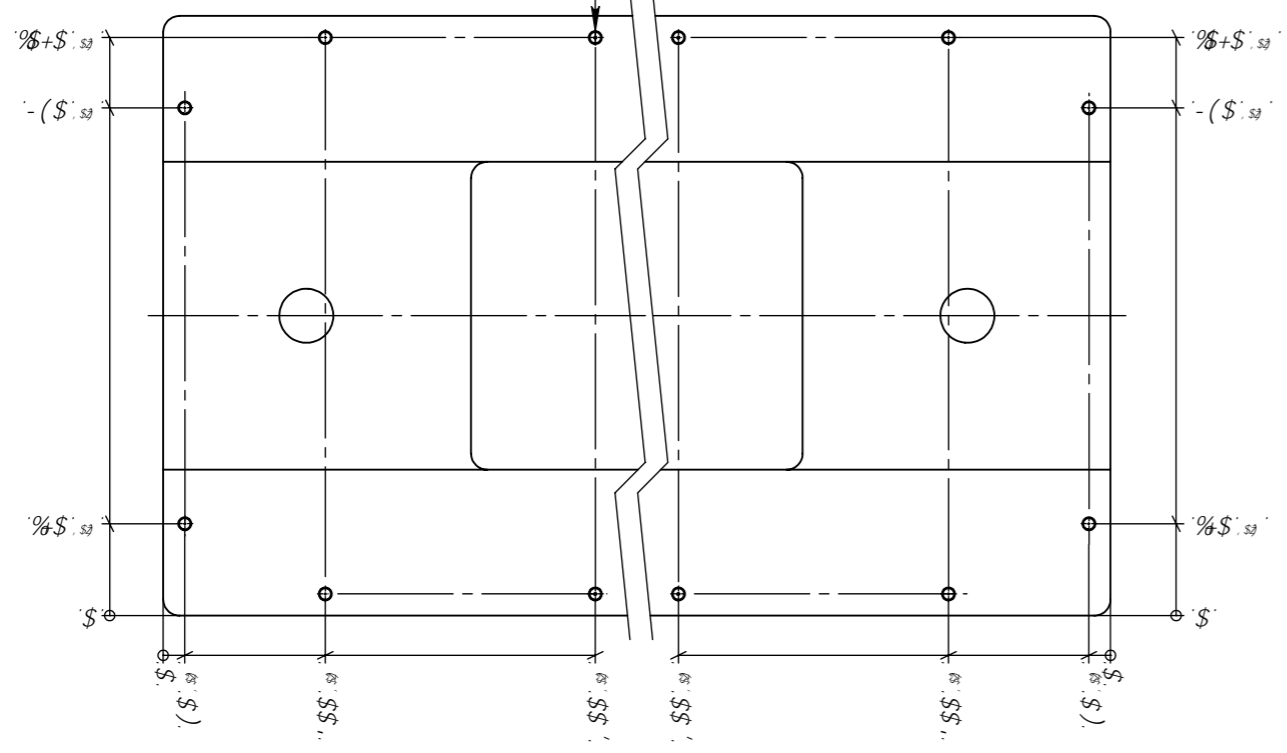


SA BAAIA
 BAAIA 1/2 LCU
 MAIA B
 SA B EIA
 BAAIA 1/2 LCU
 AAIA B
 SA B EIA
 BAAIA 1/2 LCU
 AAIA B

\$\$\$ \$\$\$ (SOS)



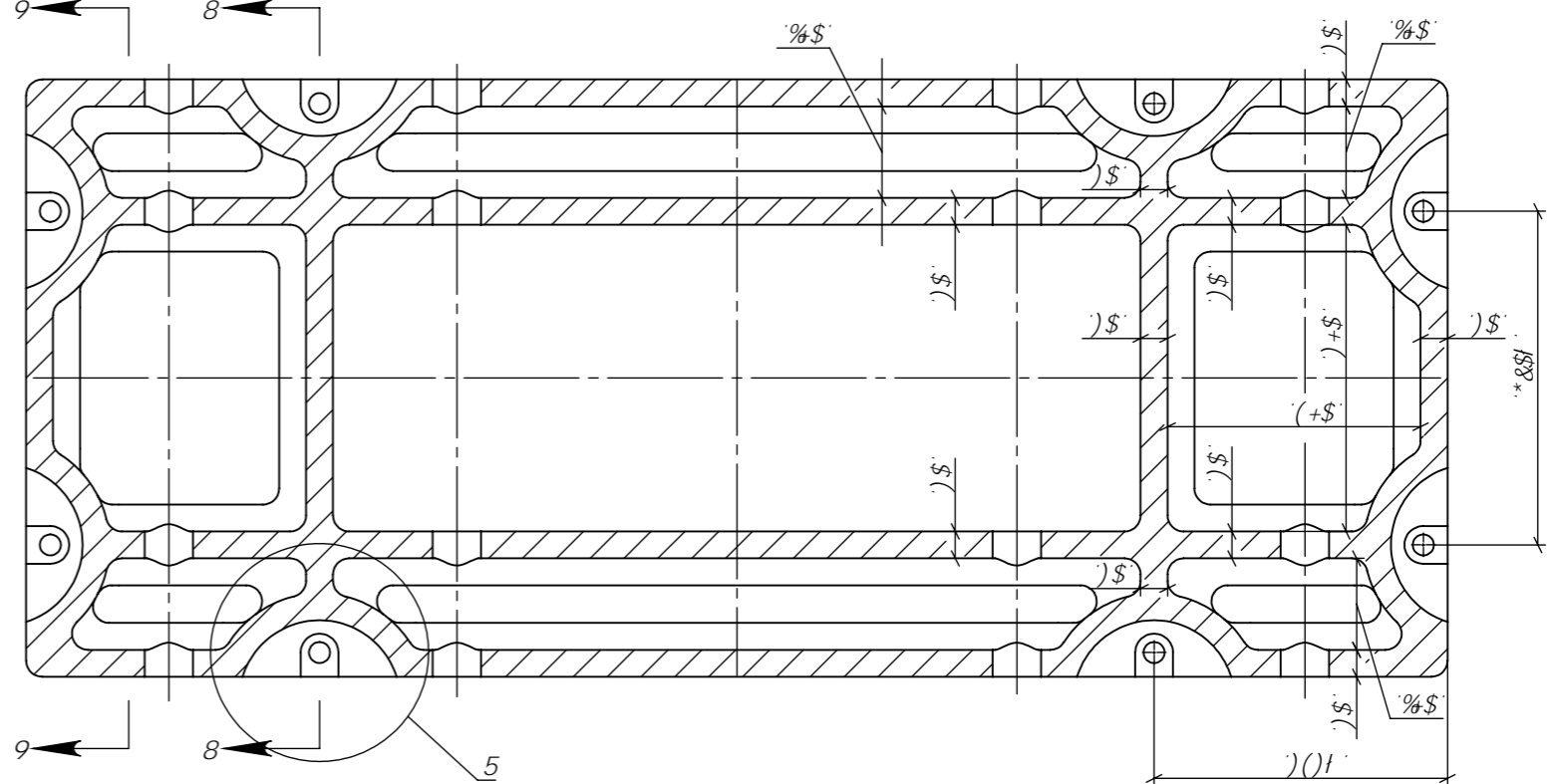
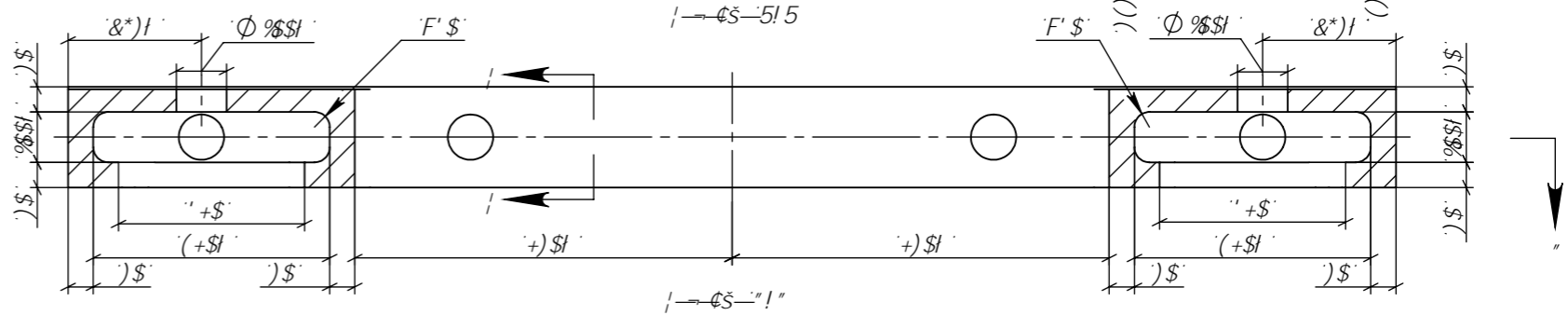
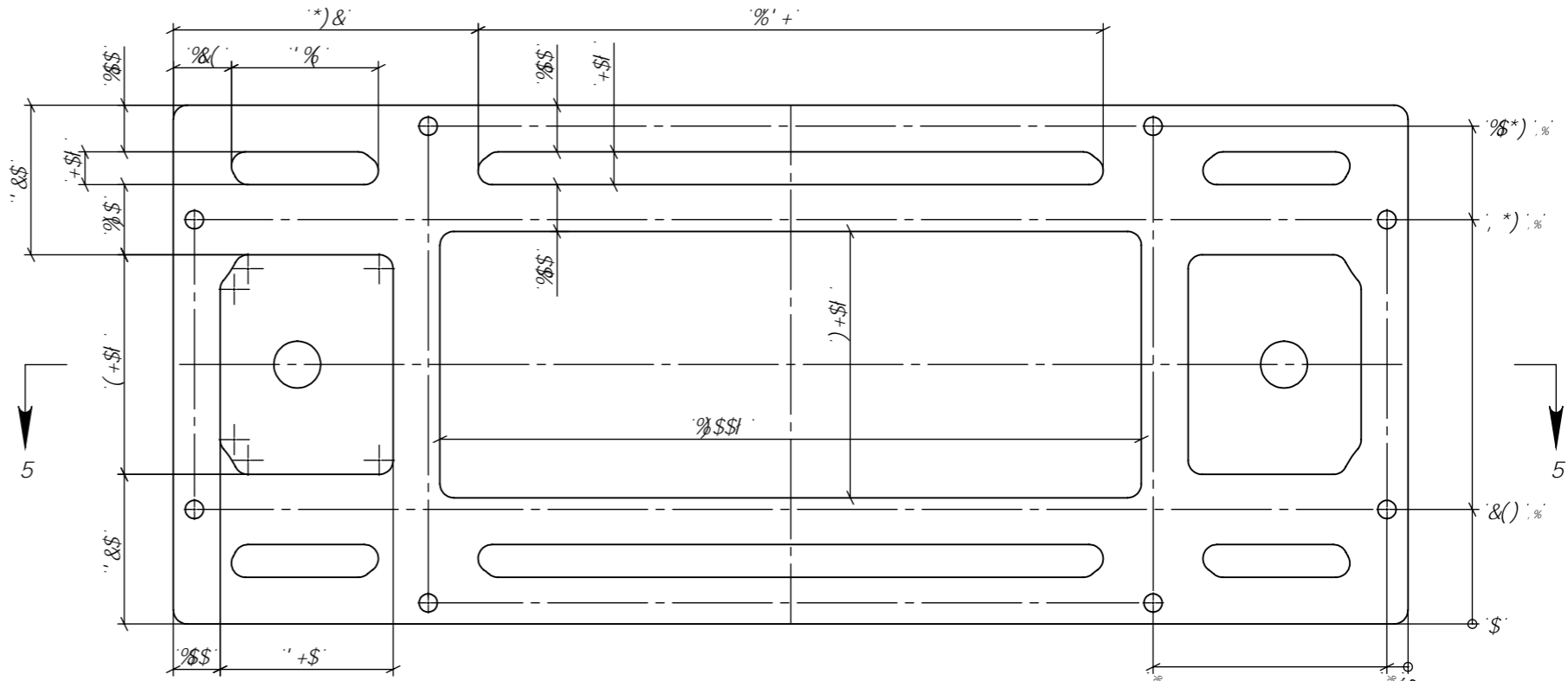
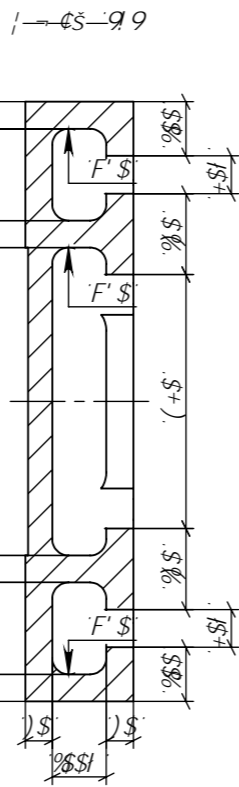
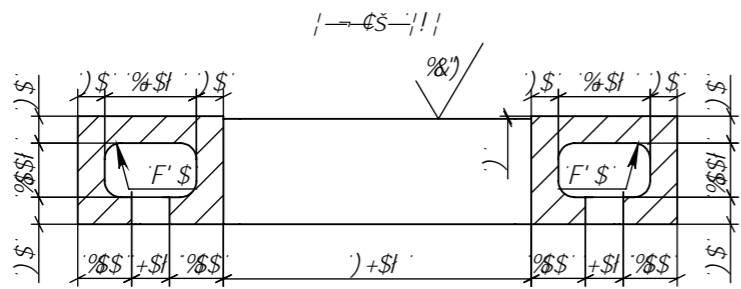
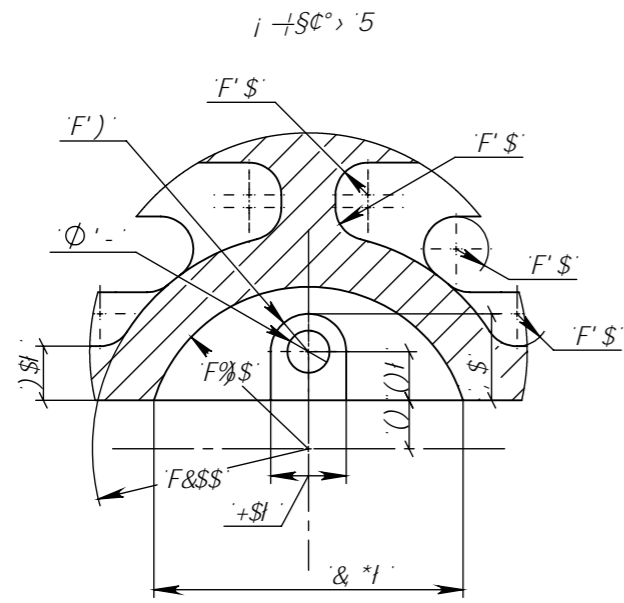
& k Φ & % ∇) \$
 A & (! * < ∇ (,
 $\checkmark \Phi$ & (2) L - \$ & ∇ A 1/4



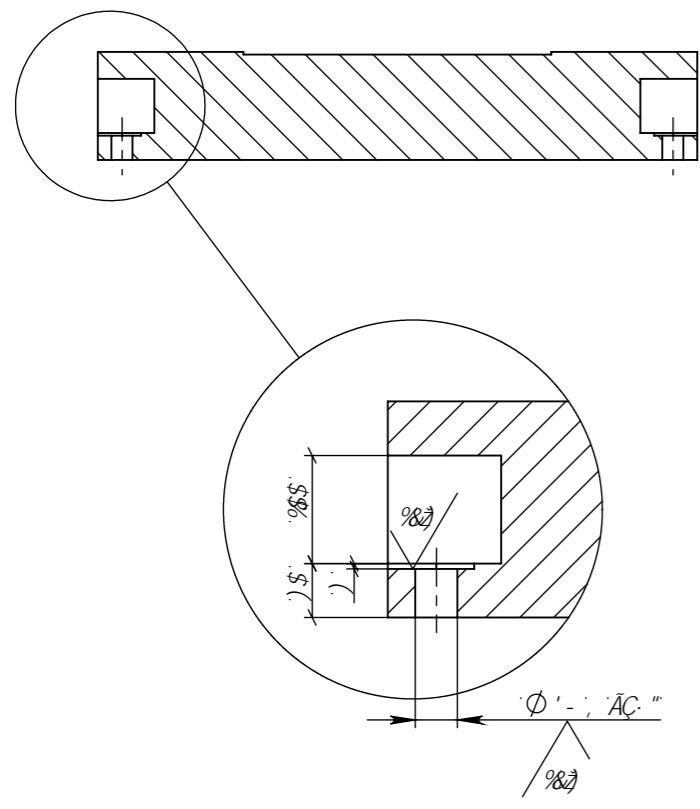
% I ¥ LIA ° AD' 1 AO AAVU A;
 & " E 1/1 1/2 1 AA EAE 1/2 AA • E I S' ' \$, - ' % < % / [% / ± # % # & "
 ' " ECA 1/2 µ & ; AVAEIZ AEAAU " µ " AA E I S' & ; S & % & I - \$ "
 (" OAVAECAI AAAC 1/2 ACA 1/2 ; 1/2 % ! \$! % AA • E I S' & ** () ! ,) "
) " OPI C ° AA 1/2 AA ° AEAAAC ° 3/4 AVAE » ADE ! & z AECA ° AA VE ! " "
 * " C ° E ; µ ; AA AD ° AV E ° 3/4 AD ° AU 1 VE AD ° % " " \$ AA "
 + " • AEACA ; µ © Y I \$; ; AA 1/2 A ° µ O I = " " AA I µ ' N A ; AU I 1/2 µ ADE AA ° AEAAAC ° 3/4 ' % A & "
 , " i µ A ; VAA µ CN A I A V A U I ° A 1/2 ' 1 ° Ç µ A 1/2

				SOS) \$\$\$ \$\$\$ \$\$\$		
				AAVEµ		
S/Á	Y/ÁE	B' 1 A ; E A "	BAAIA 1/2 LCU	Y/ÁE "	i LVAE I	i LVAE Ç L I I
¥ L I A U I "	SAA µ AA				%) ' "	% B \$
AA ° A V A				Y/ÁE %	Y/ÁE A	2
S ; A A C A "				S ° E I ; Ç A A 3/4		
C ; A A C A "				1 - ' & \$ • E I S' % % & I ,)		
C "	SAA µ AA					

\$\$\$,\$\$\$ \$\$(805



SA "BAA" A"	AA "A" 1/2" UC	SA "B" EA"	AA "A" 1/2" UC
-------------	----------------	------------	----------------



SA "Y" EA	B "A" EA"	AA "A" EA" - UC	So&) \$\$\$ \$\$\$ \$\$\$	Y 1/2
				&