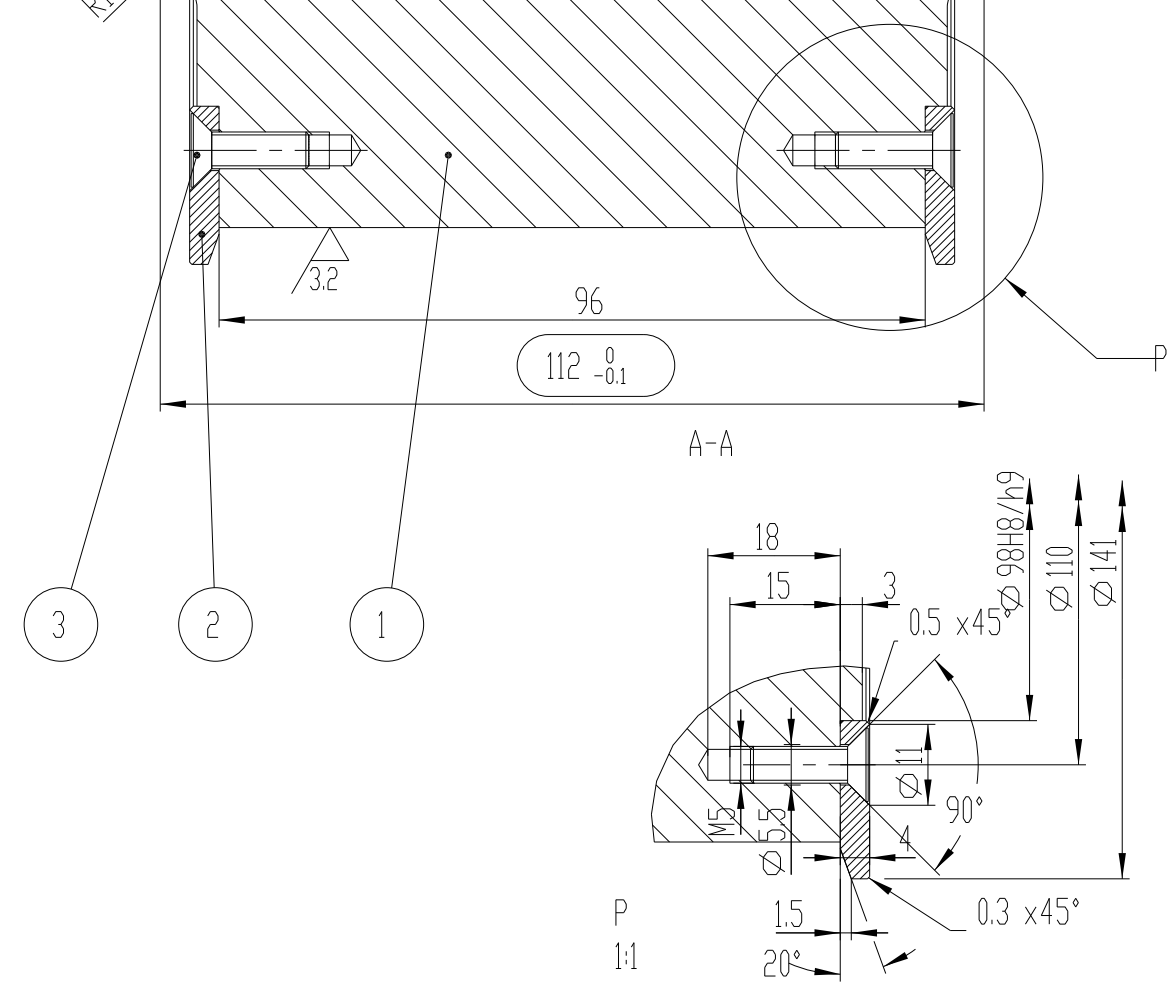
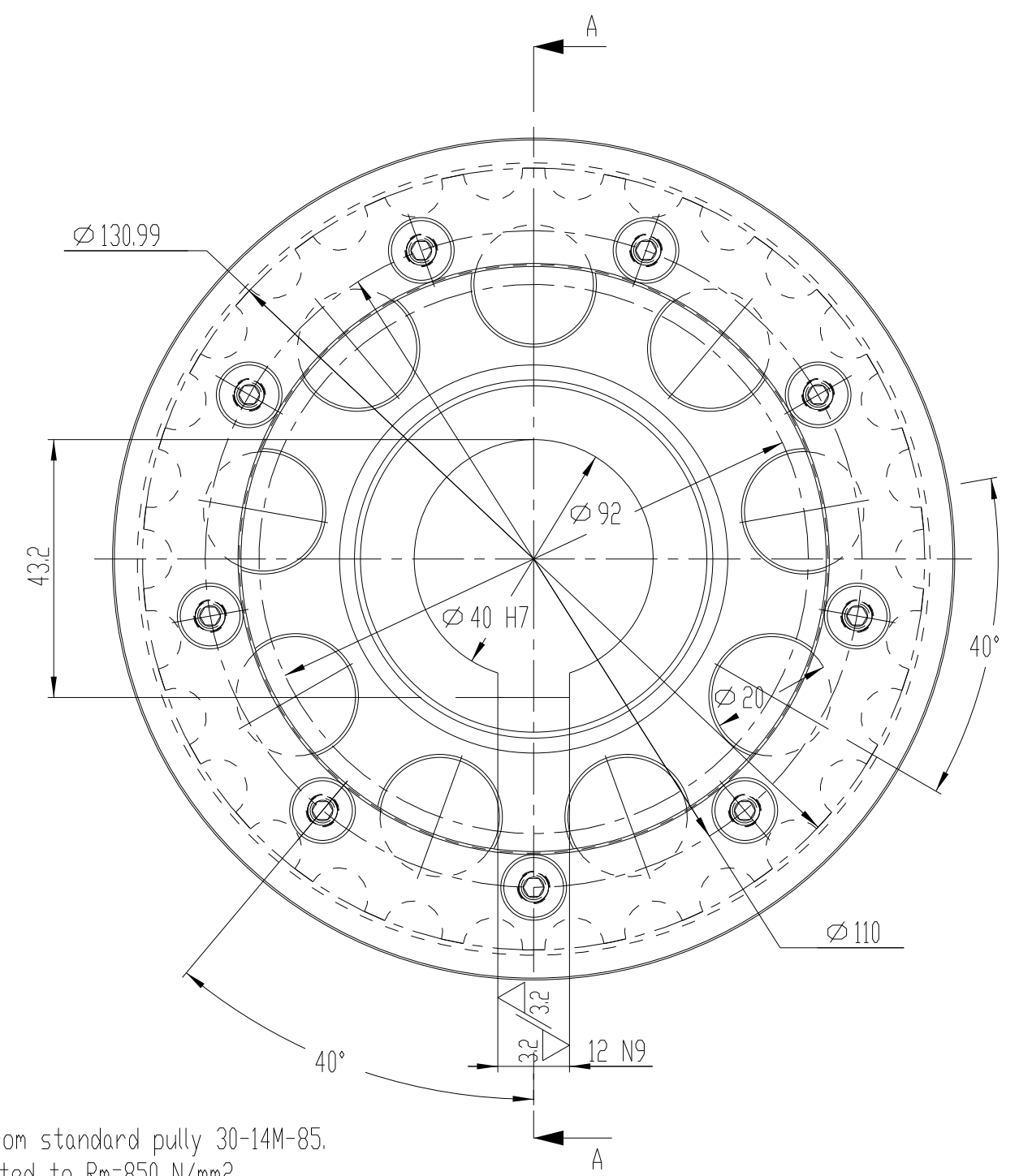
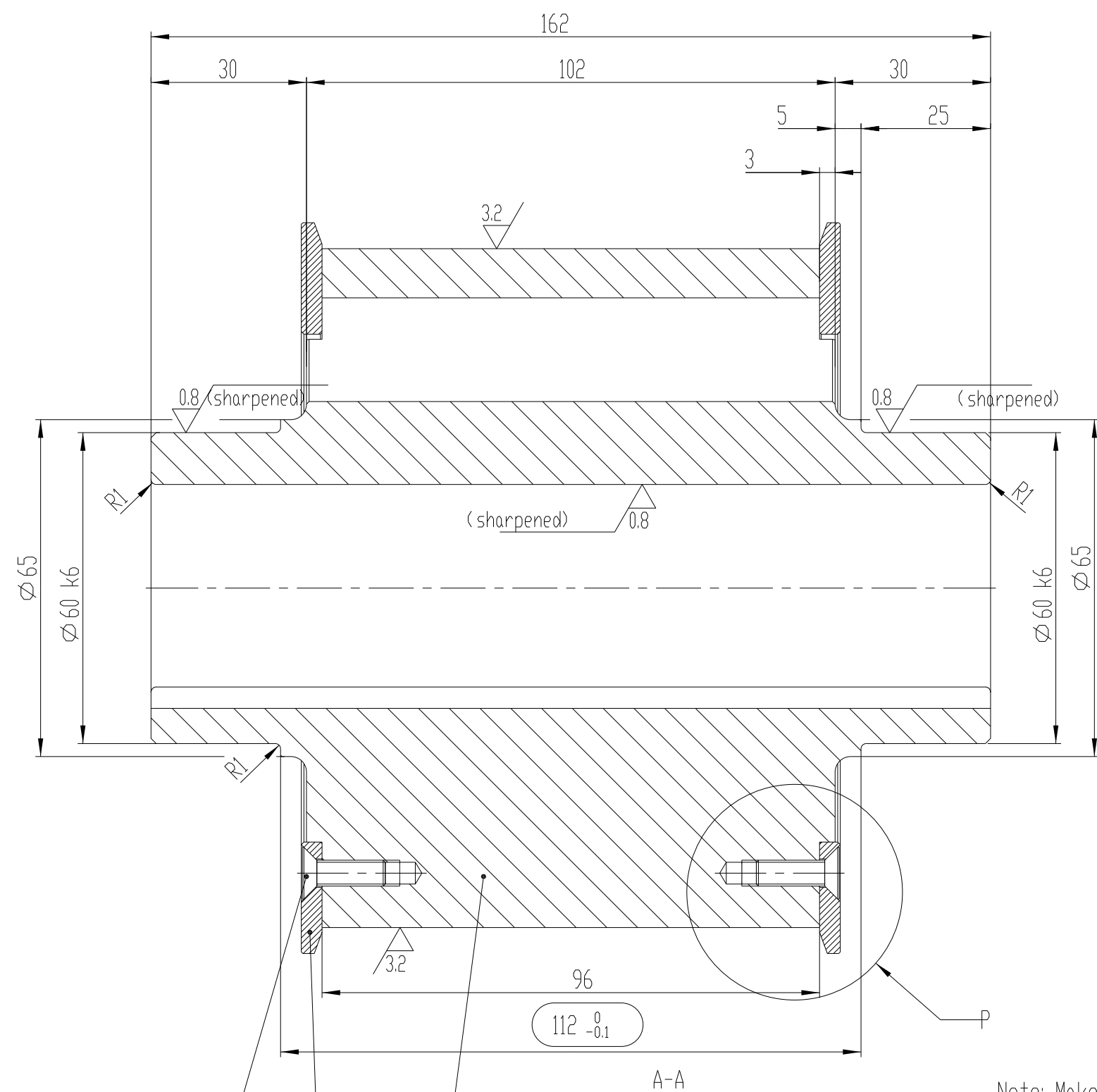


DEVIATIONS FOR DIMENSIONS WITHOUT TOLERANCES		
WELDING ENISO 13920 grade: B	LIN. & ANG. TOL. ENISO 22768-1 grade: m	GEOMETRICAL TOL. ENISO 22768-2 grade: K

6.3 / 3.2 / 0.8 (sharpened) /



Note: Make from standard pulley 30-14M-85.
Treated to Rm=850 N/mm2.

3	Hexagon socket countersunk head screw M8x16	DIN 7991	8.8	0.0		
2	Pl.4xØ141		St 37-3	0.2		
1	PULLEY		Ck 60	7.1		
Itemref	Title/Name, designation, dimension, etc	Quantity	Drawing No.	material	mass (kg)	Note
	Date		Mass (kg)			
Designed by	01-Apr-07 V.SELEZNEV		7.6			
Checked by	01-Apr-07 S.BAZIN		Sheet 1/1			
Scale	TITLE					
1:1	DRIVE PULLEY					

CONFIDENTIAL

CONFIDENTIAL Edition