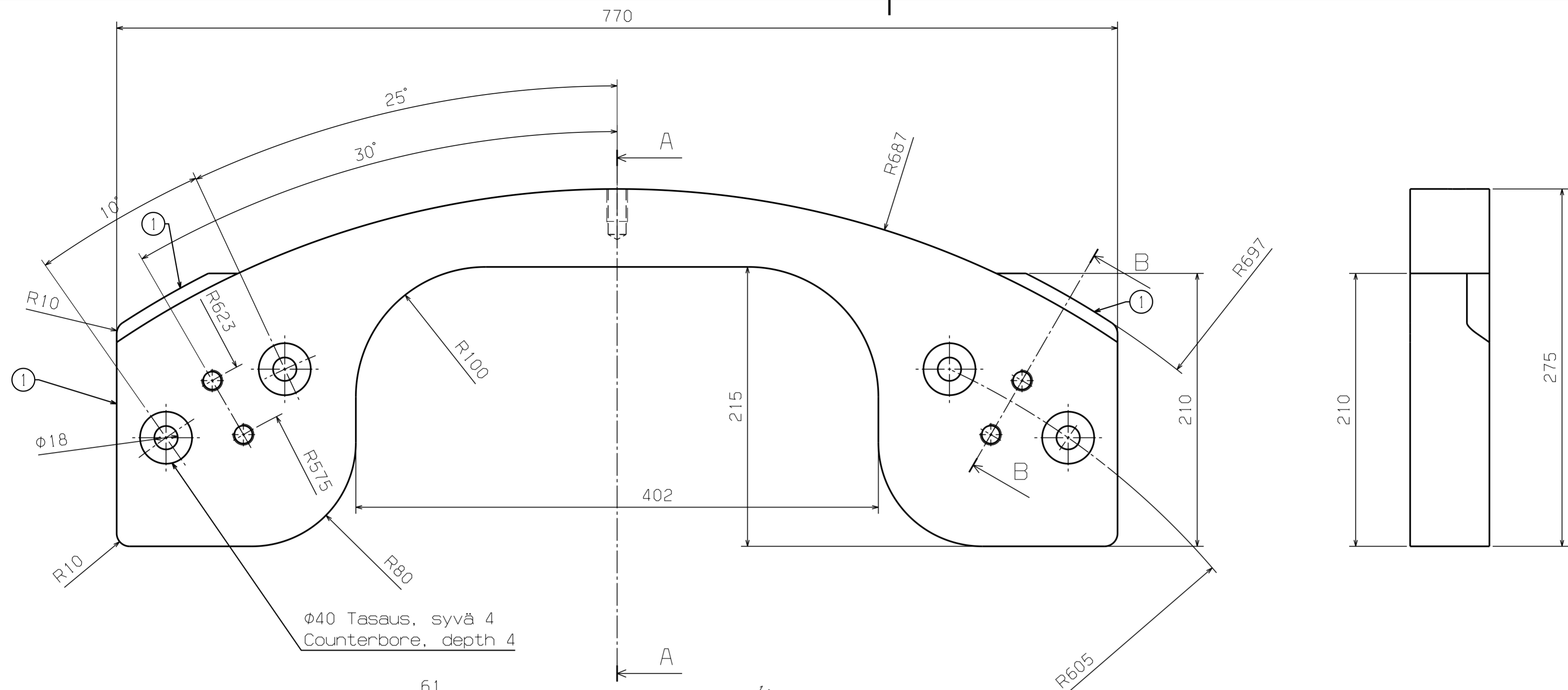
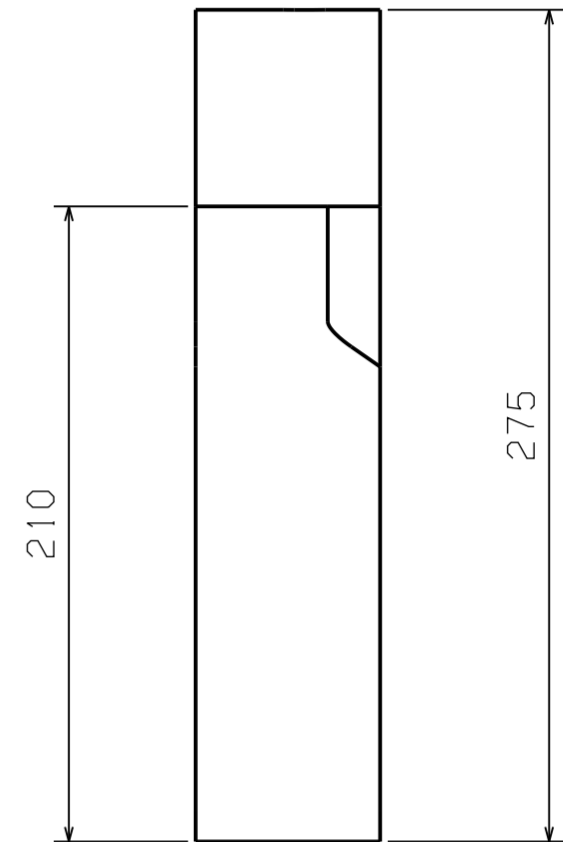


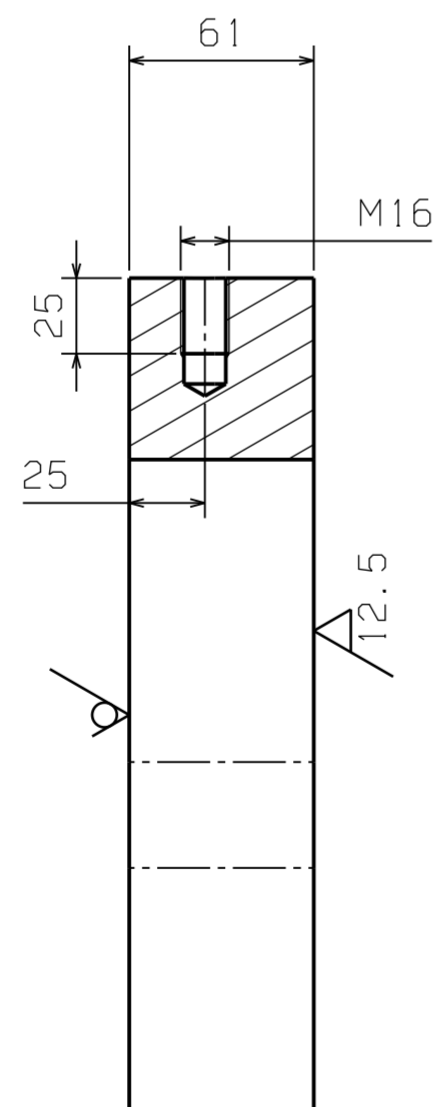
THE INFORMATION CONTAINED HEREIN IS CONFIDENTIAL AND PROPRIETARY TO VALMET TECHNOLOGIES, INC. AND IS NOT TO BE REPRODUCED, DISCLOSED TO A THIRD PARTY, MODIFIED OR USED WITHOUT A PRIOR PERMISSION OF VALMET TECHNOLOGIES, INC. OR ITS DULY AUTHORIZED REPRESENTATIVE. ALL RIGHTS RESERVED.



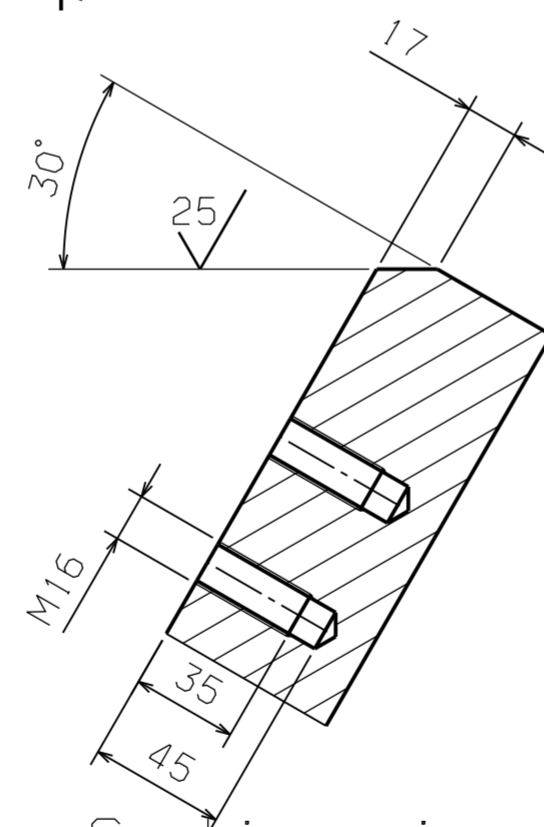
φ40 Tasaus, syvä 4
Counterbore, depth 4



SURFACE TREATMENT	
NO PAINTING	<input checked="" type="checkbox"/>
PAINING ACCORDING TO PAINTING SPECIFICATION	<input type="checkbox"/>
STANDARD SHADE COMPONENT	<input type="checkbox"/>
PAINTING SYSTEM	
<input checked="" type="checkbox"/>	
<input checked="" type="checkbox"/>	
<input checked="" type="checkbox"/>	



Section view A-A
Scale: 2:5



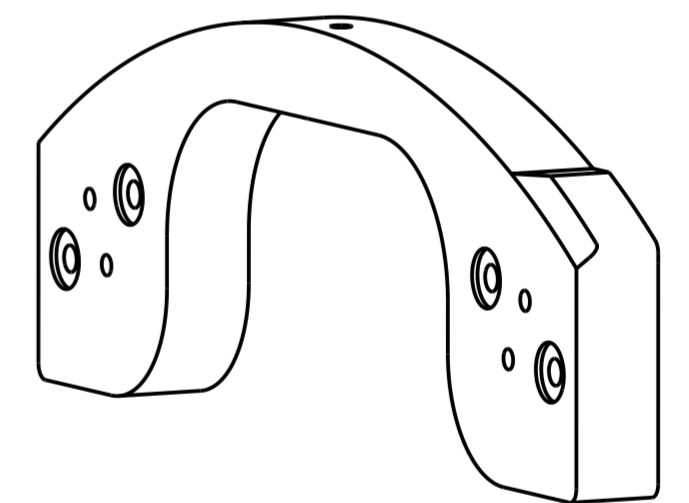
Section view B-B
Scale: 2:5

Käytettävä porausjigiä
Drilling jig to be used

① Kohdistuspinta jigille
Alignment surface to jig

Purseidenpoisto polttoleikkauksen ja porauksen jälkeen
Deburring after flame cutting and drilling

✓ (25 / 12.5 /)



GENERAL TOLERANCES, DIMENSIONS WITHOUT INDIVIDUAL TOLERANCE INDICATIONS:		BOHU1BM6	
MACHINING: ISO 2768-mK ISO 2768-2/EN 22768-2/ISO 2768-1/EN 22768-1		FI/EN	
WELDING: EN ISO 15613-BE		PROJECTION	SCALE
CASTING: EN ISO 18563-3-DCTG II		1:1	46.7
WELDING QUALITY: EN ISO 5817 LEVEL C		WEIGHT kg	
THERMAL CUTTING: EN ISO 9013-133		46.7	
PRODUCT KUIVATUSOSA / DRYER SECTION		DESIGNER J.-P. PERTTULA	DATE 2017-11-17
VASTAPAINO COUNTERWEIGHT		CHIEF T. SORVISTO	DATE 2017-11-17
REF: RAU400953.06		APPD	DATE
WORK 250309	FILE	A2	DRAWING ID
CATIA V5			RAUH410673001/1

DATE	NAME	CHKD	REVISION	FILE	CHG/KEY

INTERNAL

THE INFORMATION CONTAINED HEREIN IS CONFIDENTIAL AND PROPRIETARY TO VALMET TECHNOLOGIES, INC. AND IS NOT TO BE REPRODUCED, DISCLOSED TO A THIRD PARTY, MODIFIED OR USED WITHOUT A PRIOR PERMISSION OF VALMET TECHNOLOGIES, INC. OR ITS DULY AUTHORIZED REPRESENTATIVE. ALL RIGHTS RESERVED.