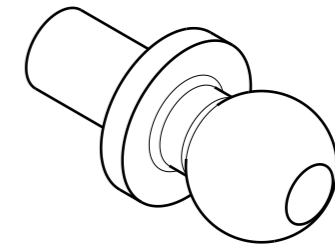


ISO VIEW  
SCALE 2:1



**NOTE:**

- 1 - FOR MISSING DIMENSIONS REFER TO 3D DATA
- 2 - WORKING TEMPERATURE: FROM -30°C TO +80°C
- 3 - PART SHALL NOT CONTAIN ANY PROHIBITED OR RESTRICTED MATERIALS ACCORDING TO THE ELV 2000/53/EC

Orhan Otomotiv	Aciklama (EXPLANATION)
A	DIM. 10 ± 0.1 HAS BEEN ADDED. (I.T) (M.T)
B	SPEC. ADDED. (I.T) (P.P)

MODIF (ALTERATIONS)

RESIM NO: (DRAWING NO) 790022	REV.: (IND.) B	ARAC TIPI: (VEHICLE TYPE) JX0/TL4/ TL8	MIKTAR: (QTY) 1	TARİH: (DATE) 16/05/2016
PARÇA ADI: (PART NAME) SHIFT SPHERE		BITMIS URUN RESMI: (MAIN DRAWING) RENAULT	ÖLÇEK: (SCALE) 5:1	RESMİ ÇİZEN: (DRAWN BY) I. TURUNC
MALZEME: (MATERIAL) 11SMn30		SARTNAME: (SPECIFICATION) EN 10087/10277-3 47-01-000	FORMAT: (FORMAT) A3	KONTROL: (CONTROLLED BY) A. TANCREDI
İSLEM: (TREATMENT) Fe/Zn 12 IV		AGIRLIK: (MASS) 8,6 g.	CİZİM PROGRAMI (DRAWING PRG.) V5	ONAY: (APPROVED BY) P. PONNET



Permissible deviations from the nominal value d (mm)									
Nominal value	0.5 ≤ d < 3	3 ≤ d < 6	6 ≤ d < 30	30 ≤ d < 120	120 ≤ d < 400	400 ≤ d < 1000	1000 ≤ d < 2000	2000 ≤ d < 4000	Angle Angle
Tolerance	±0.2	±0.3	±0.5	±0.8	±1.2	±2	±3	±4	1°