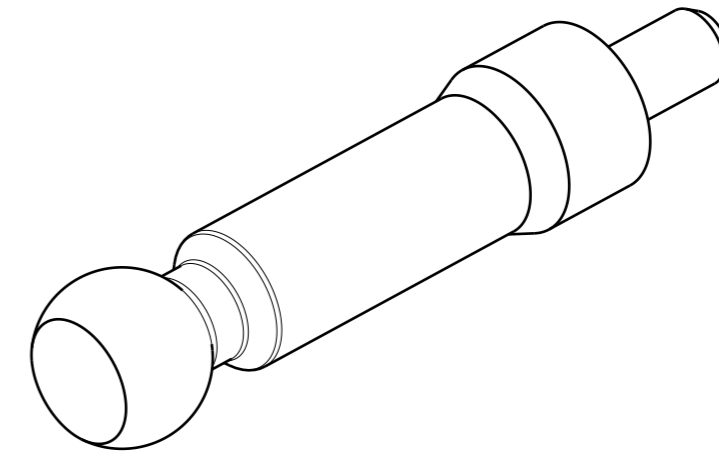


ISO VIEW



**NOTES:**

- 1 - FOR MISSING DIMENSIONS REFER TO 3D DATA
- 2 - WORKING TEMPERATURE: -30°C TO +80°C
- 3 - PART SHALL NOT CONTAIN ANY PROHIBITED OR RESTRICTED MATERIALS ACCORDING TO THE ELV 2000/53/EC

Orhan Otomotiv	Aciklama (EXPLANATION)
A	GUIDE SHAPE ADDED. (I.T) (P.P)
MODIF (ALTERATIONS)	

RESIM NO: (DRAWING NO) <b>790021</b>	REV.: (IND.) <b>A</b>	ARAC TIPI: (VEHICLE TYPE) TL4/TL8	MIKTAR: (QTY) <b>1</b>	TARİH: (DATE) 30/05/2016
PARÇA ADI: (PART NAME) <b>SELECT PIVOT</b>		BITMIS URUN RESMİ: (MAIN DRAWING) RENAULT	ÖLÇEK: (SCALE) <b>2:1</b>	RESMİ ÇİZEN: (DRAWN BY) I. TURUNC
		FORMAT: (FORMAT) <b>A3</b>	KONTROL: (CONTROLLED BY) A. TANCREDI	
		CİZİM PROGRAMI (DRAWING PRG.) <b>V5</b>	ONAY: (APPROVED BY) P. PONNET	

Permissible deviations from the nominal value d (mm)									
Nominal value	0.5≤d<3	3≤d<6	6≤d<30	30≤d<120	120≤d<400	400≤d<1000	1000≤d<2000	2000≤d<4000	Angle Angle
Tolerance	±0.2	±0.3	±0.5	±0.8	±1.2	±2	±3	±4	1°

MALZEME: (MATERIAL) <b>11SMn30</b>	SARTNAME: (SPECIFICATION) UNI EN 10087 /10277-3
İSLEM: (TREATMENT)	AGIRLIK: (MASS) <b>33,1 g.</b>
EK BILGI: (ADDITIONAL INF.)	

