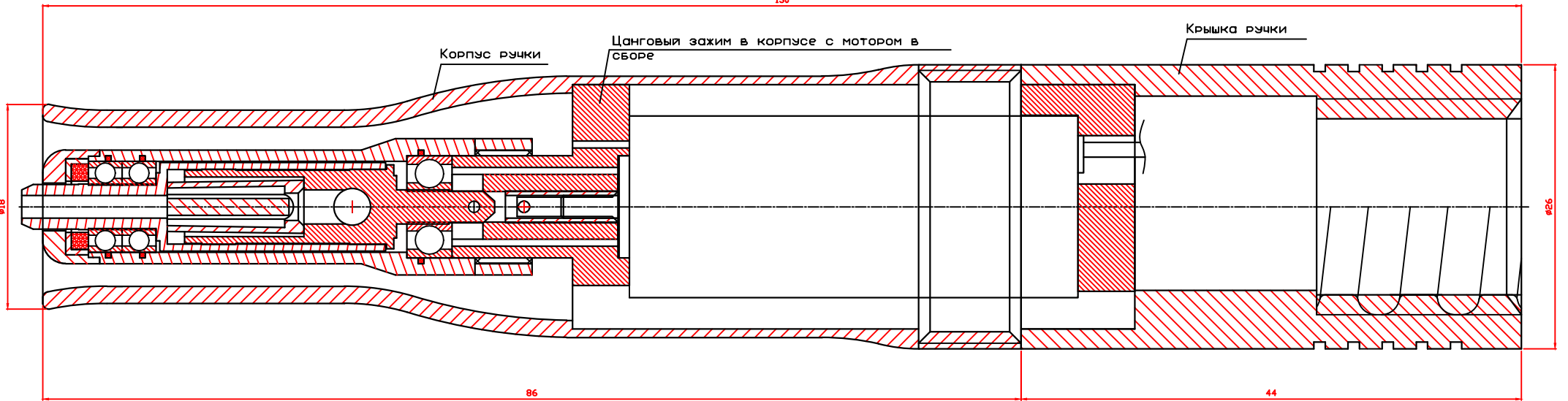
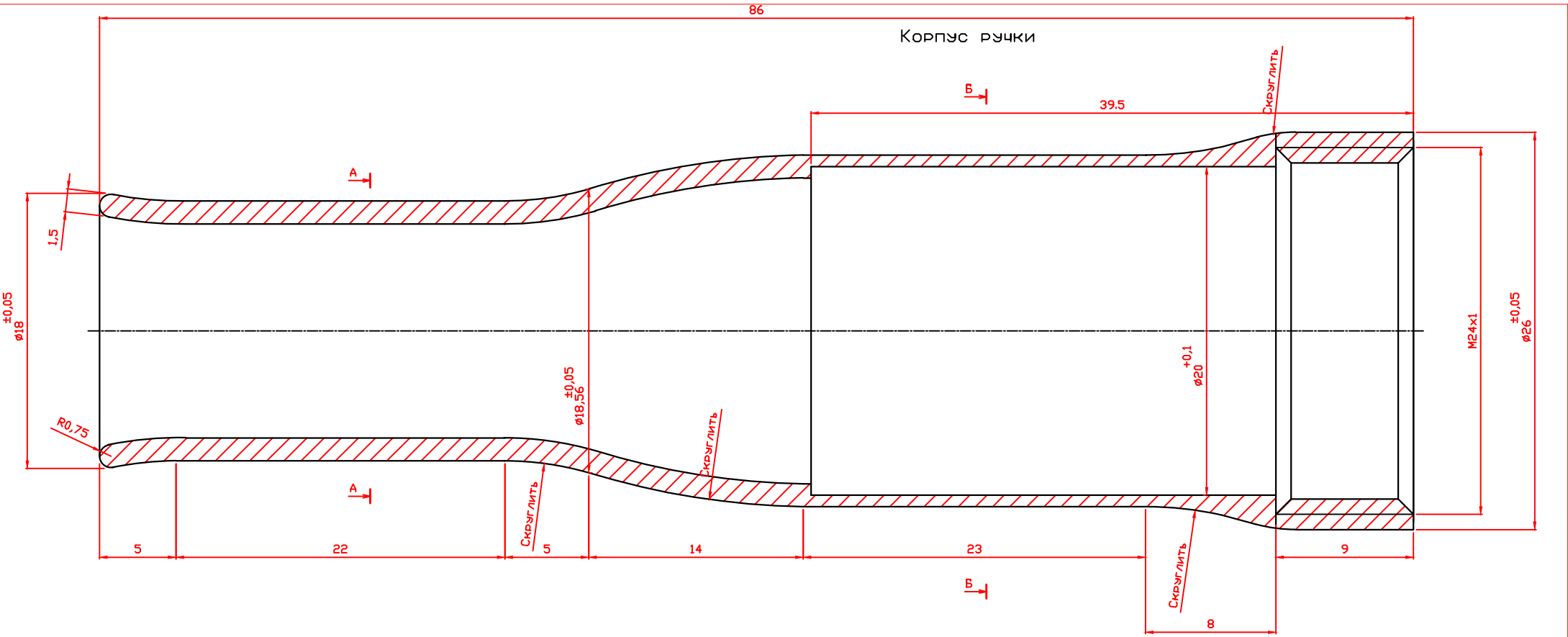


Ручка в сборе

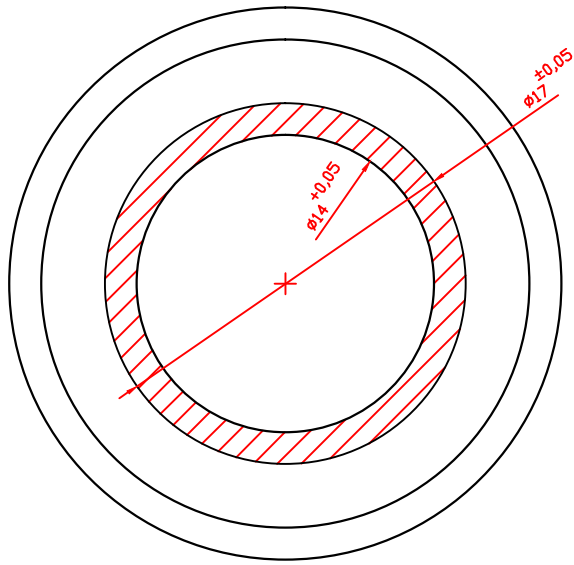
130



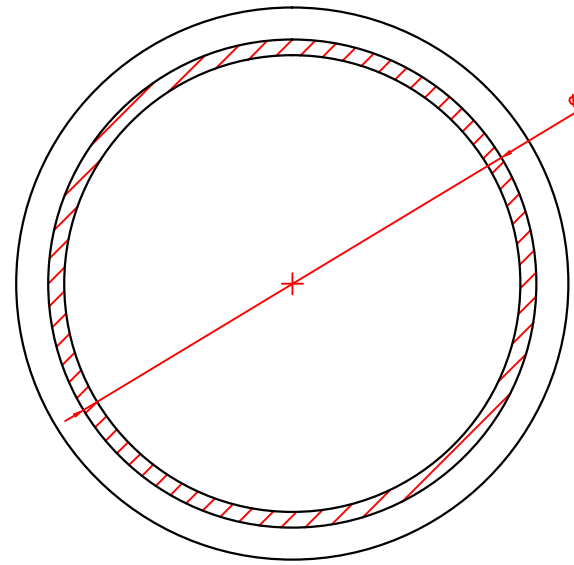
Корпус ручки



A-A

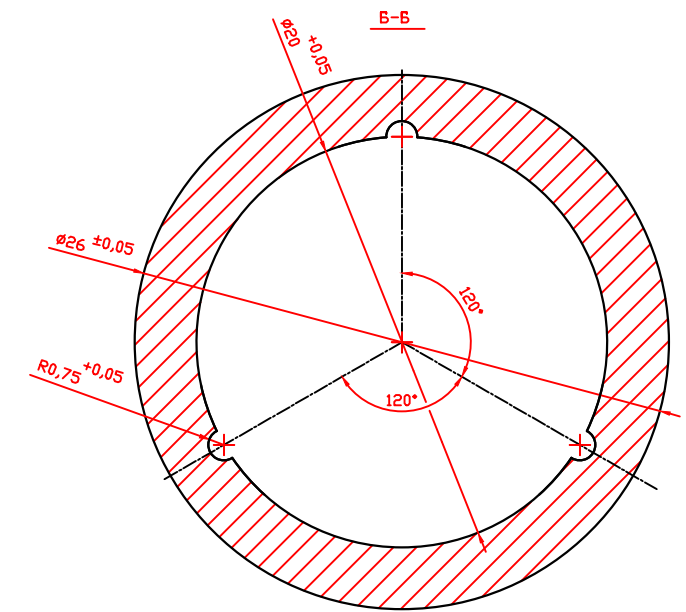
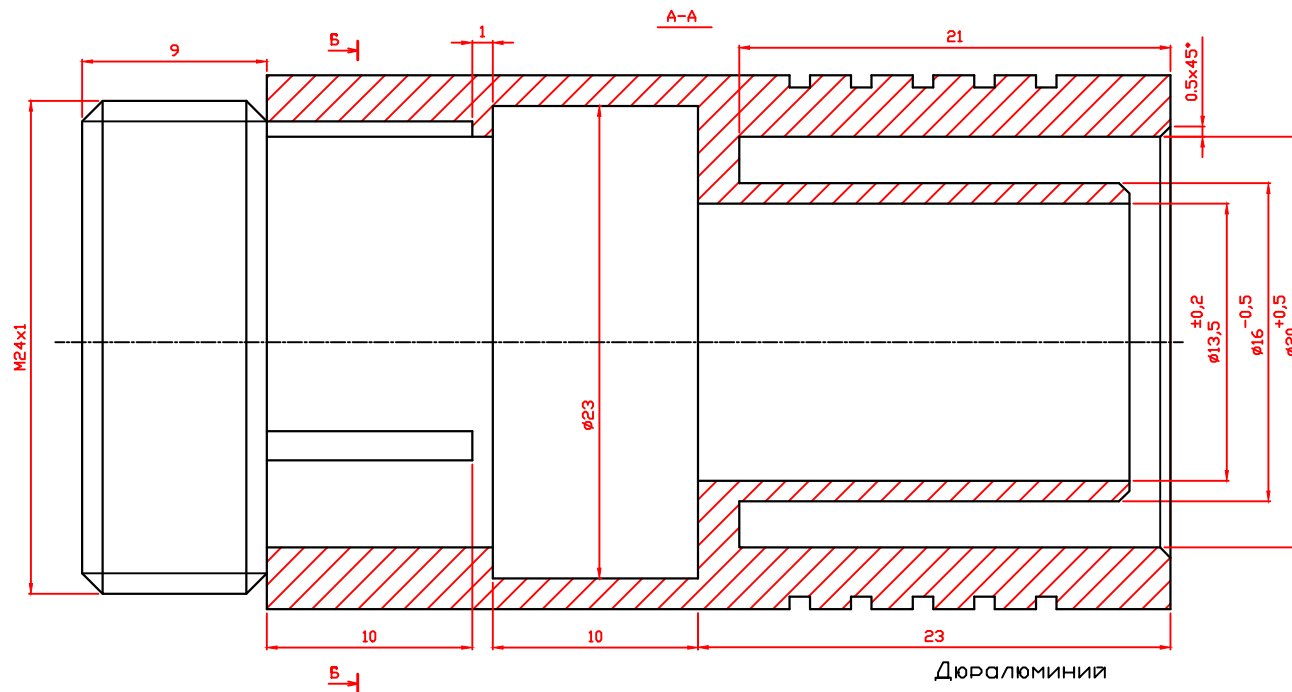
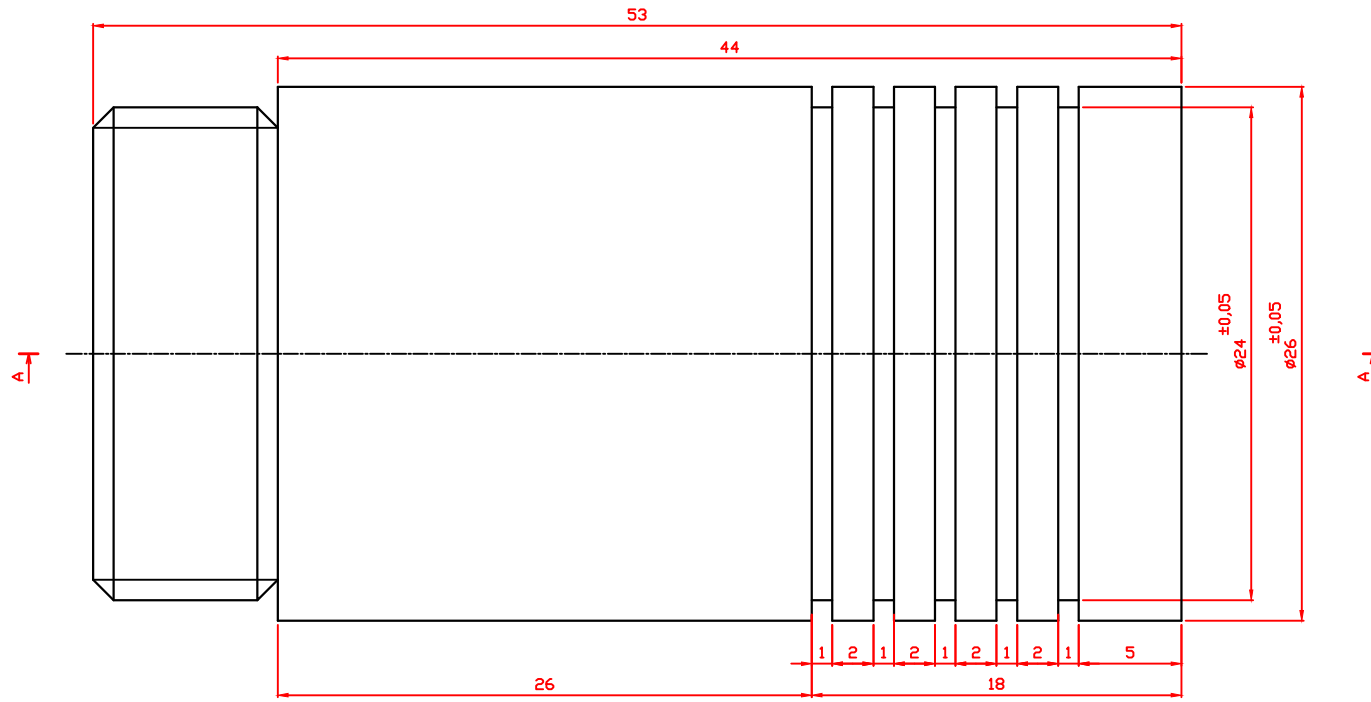


B-B

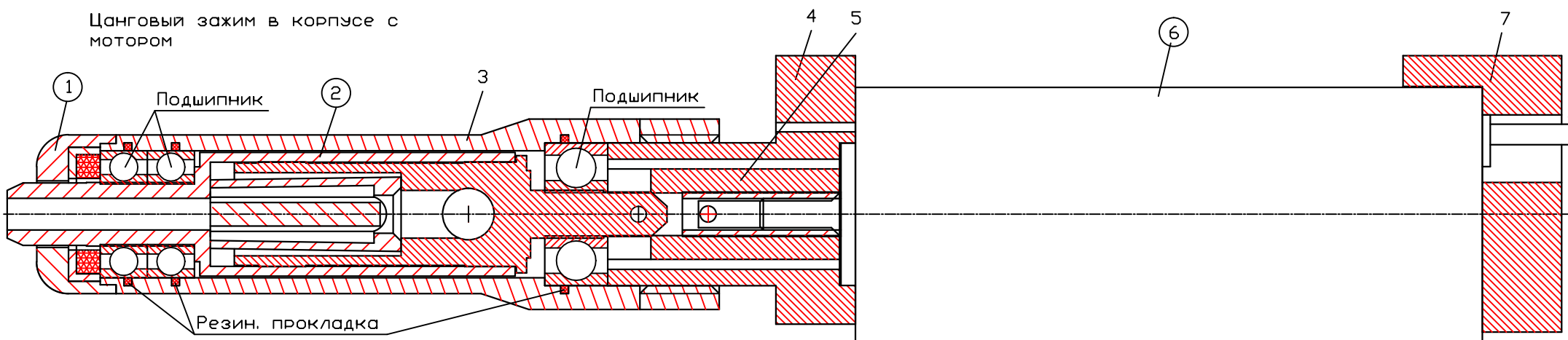


Дюралюминий

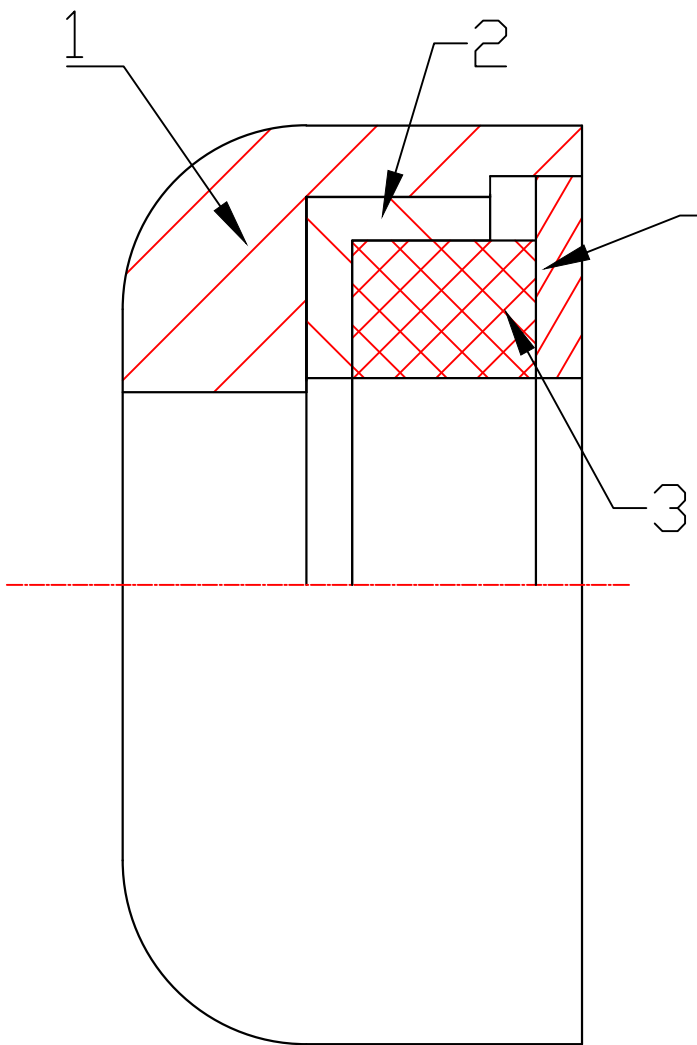
Крышка ручки



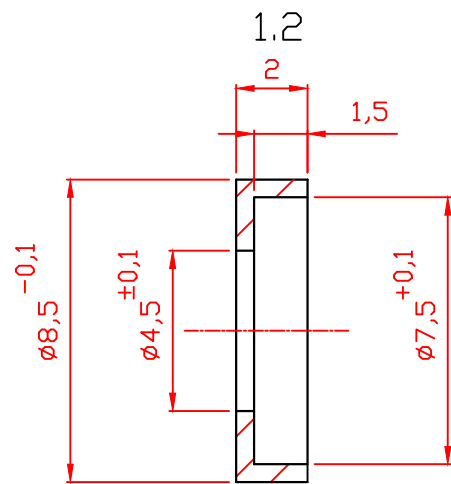
Цанговый захим в корпусе с
мотором



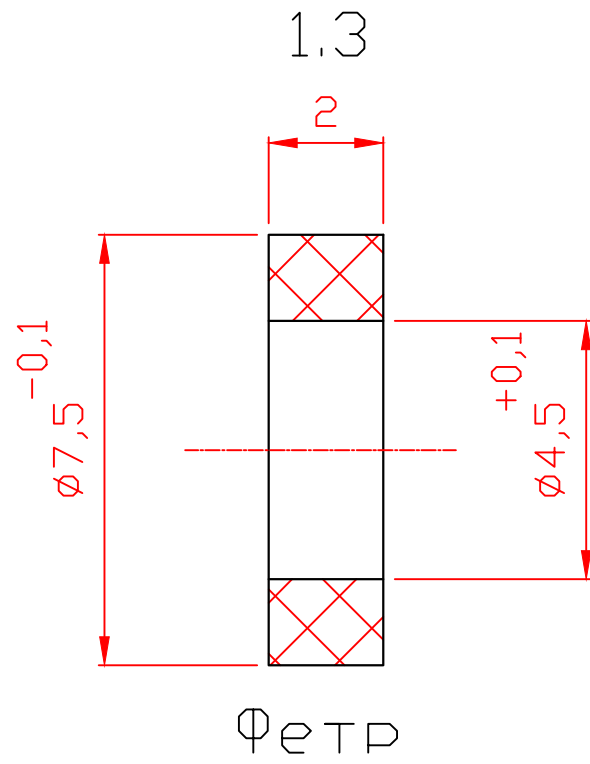
1



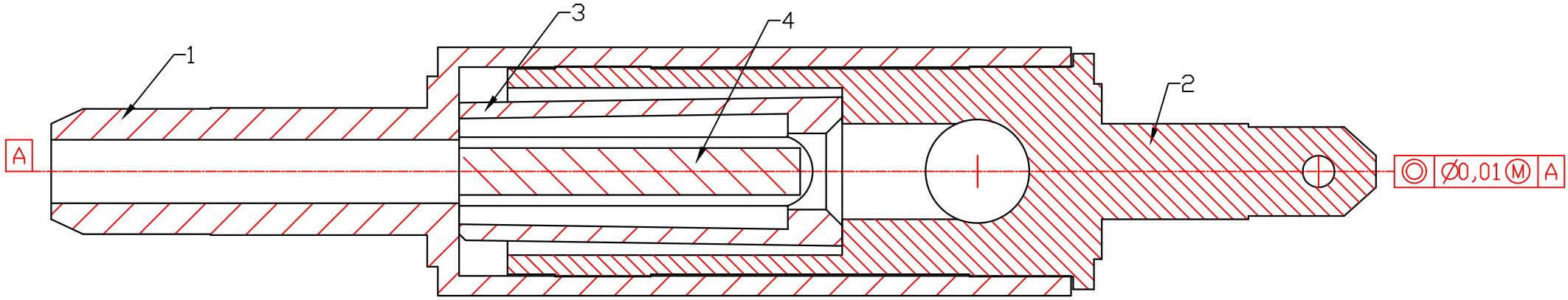
Пружина тарельчатая
(шайба сталь закаленная)

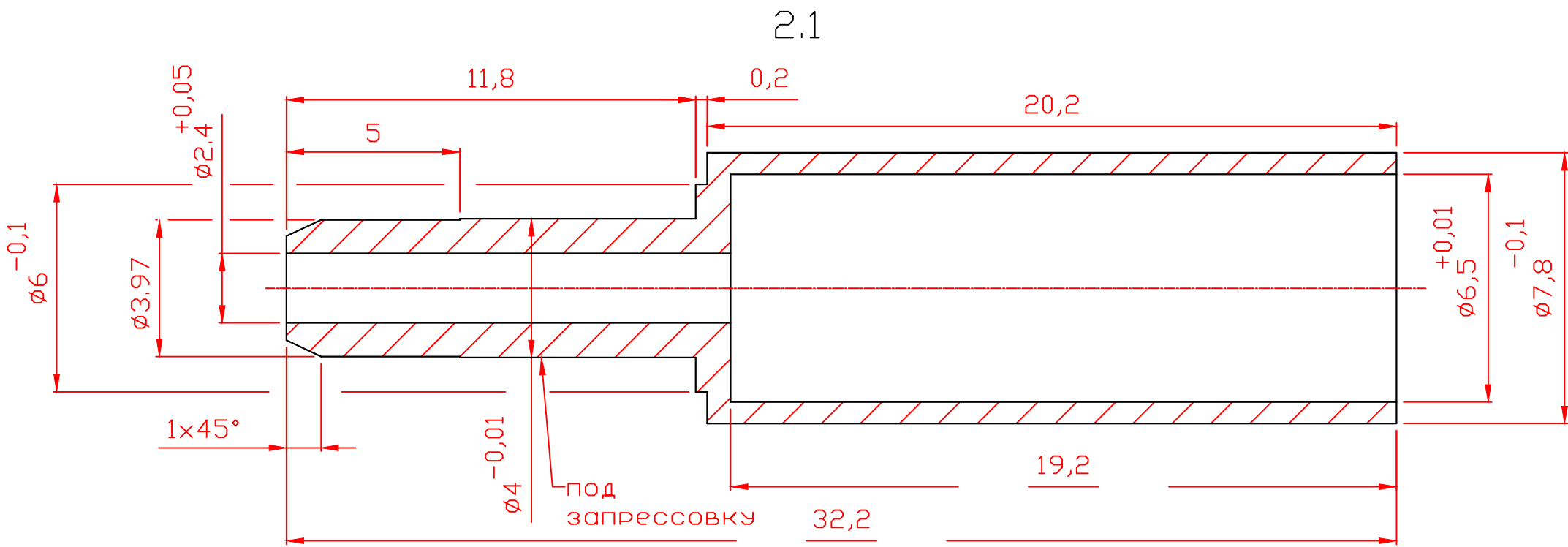


Латунь



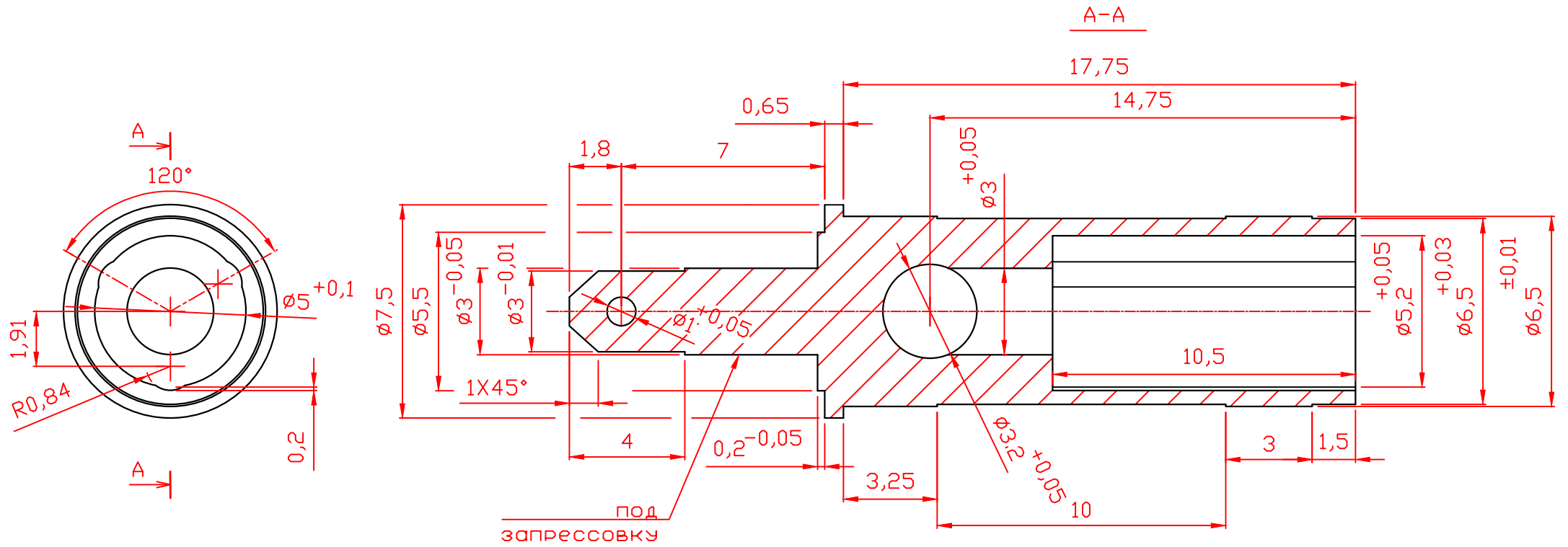
2





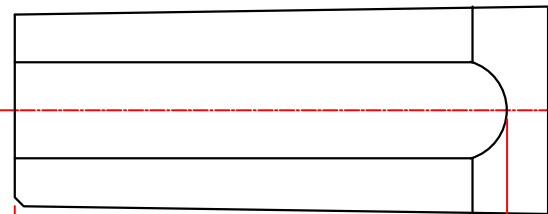
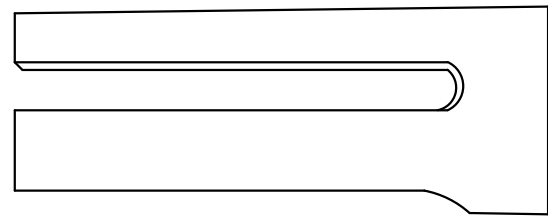
Сталь нержавеющая

2.2

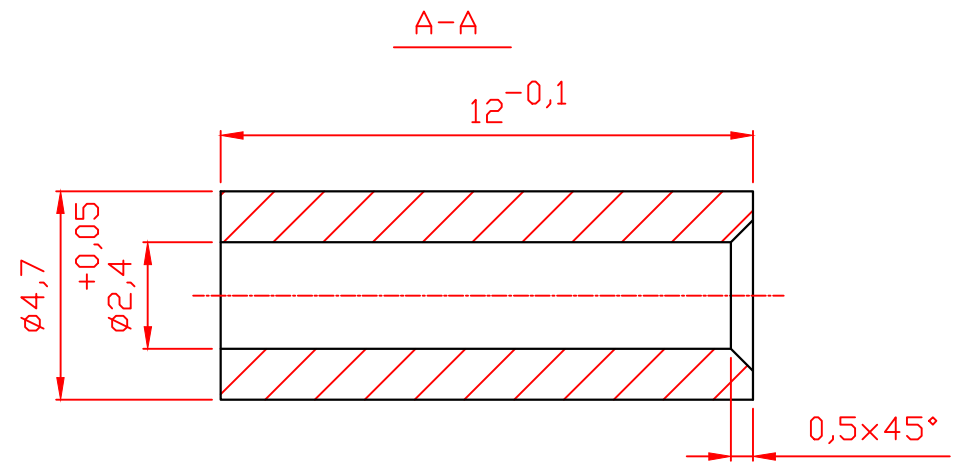
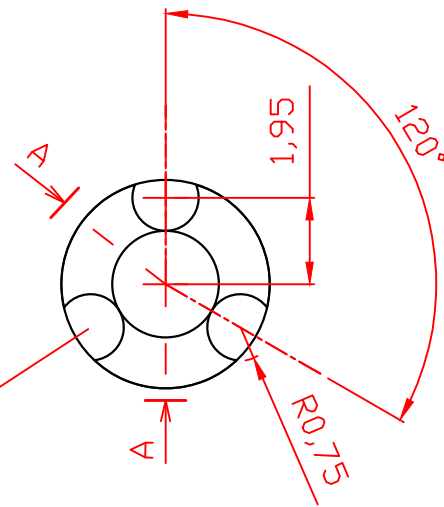


Сталь нержавеющая

2.3

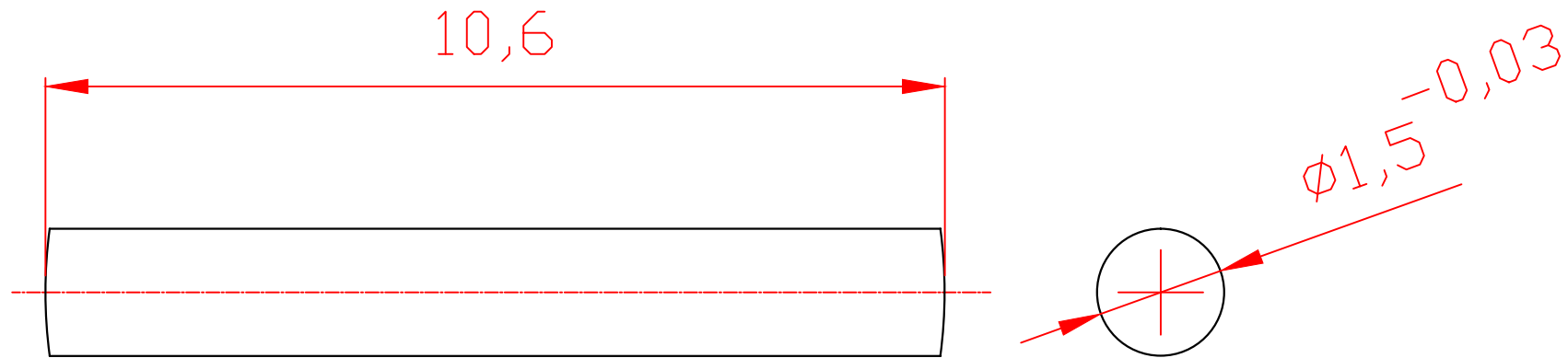


сверлить на
глубину 10



Сталь нержавеющая

2,4 - 3 шт.

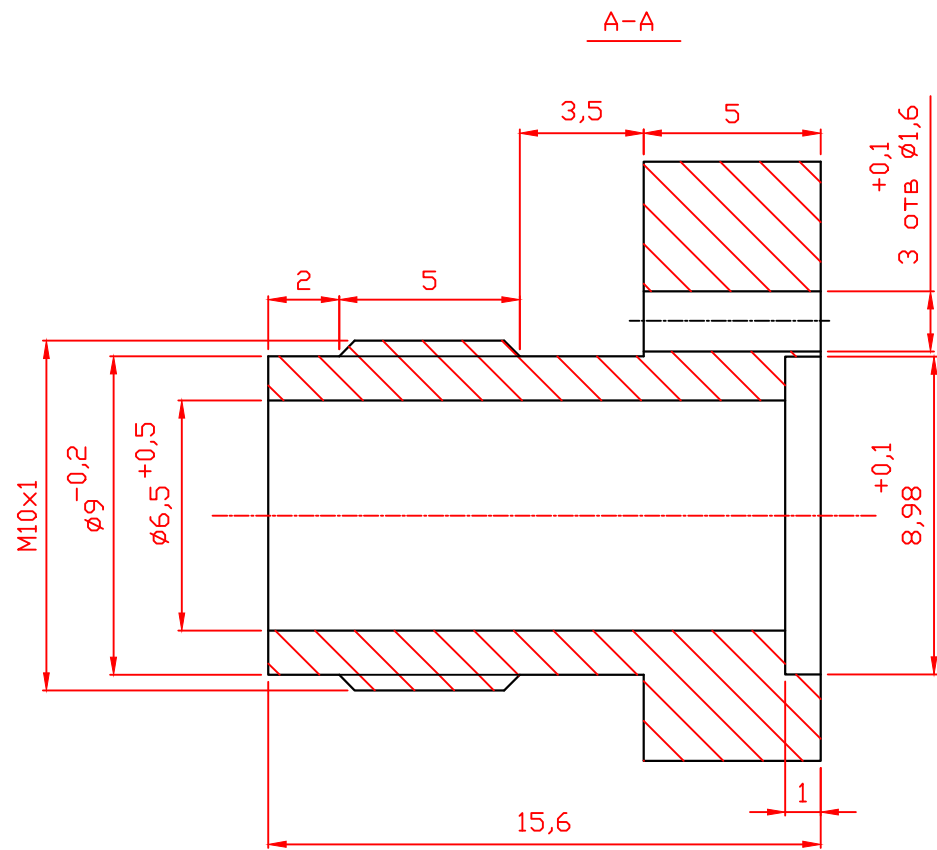
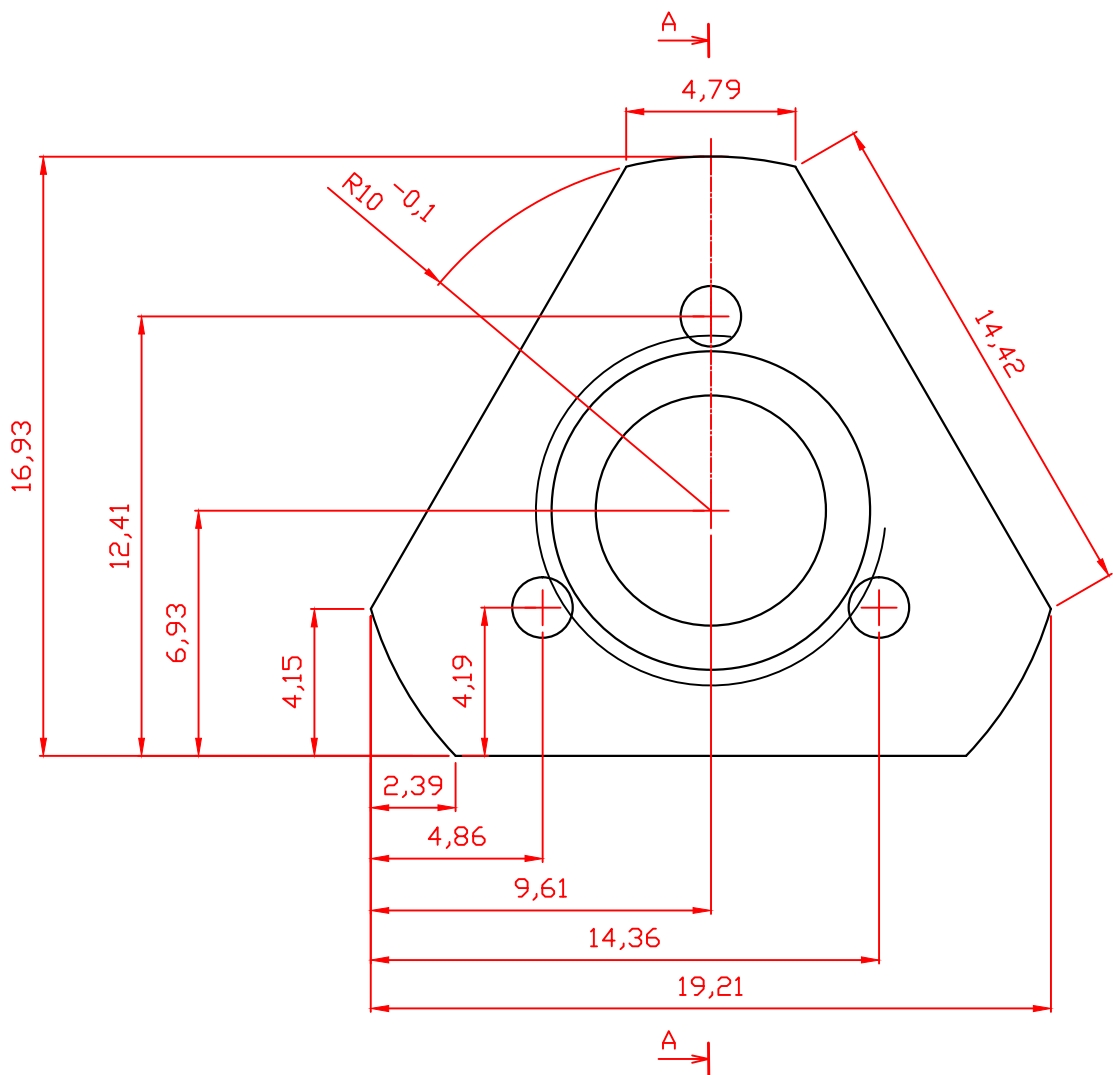


Сталь закаленная

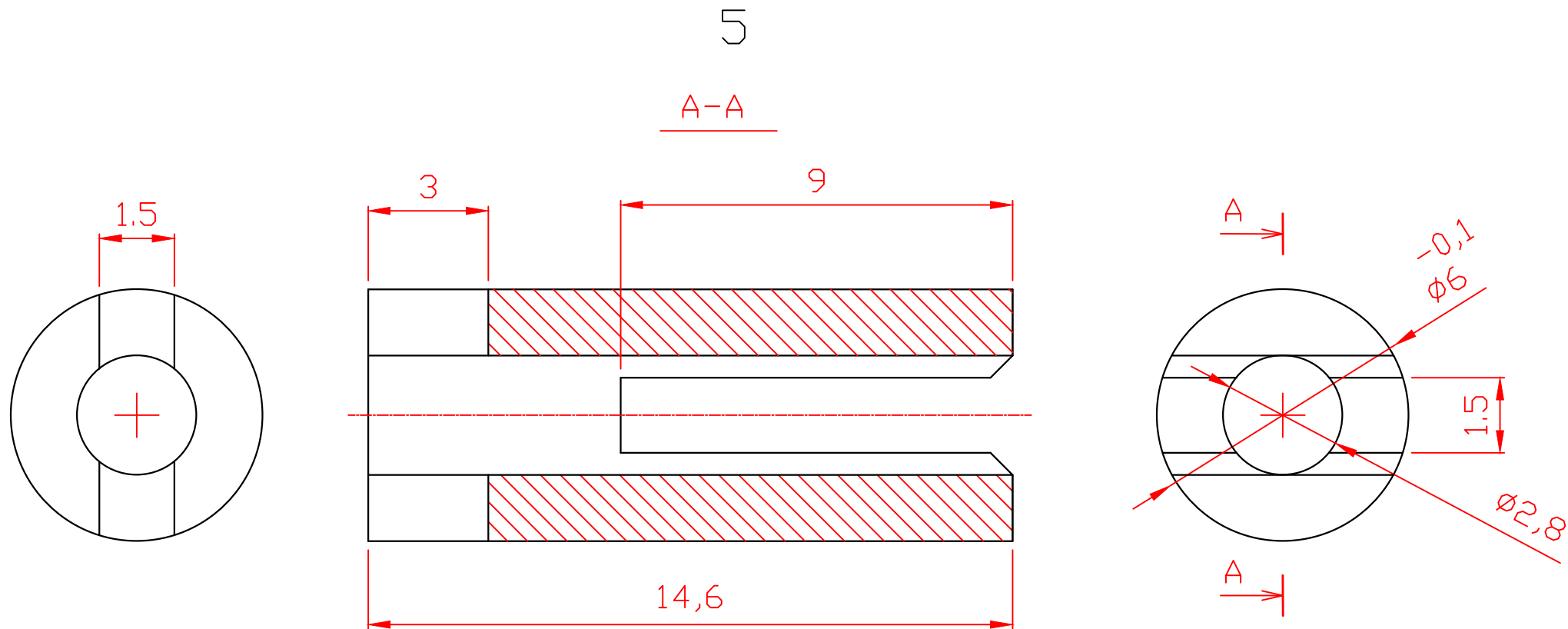
Примечание:

* - Покупная позиция

4-1

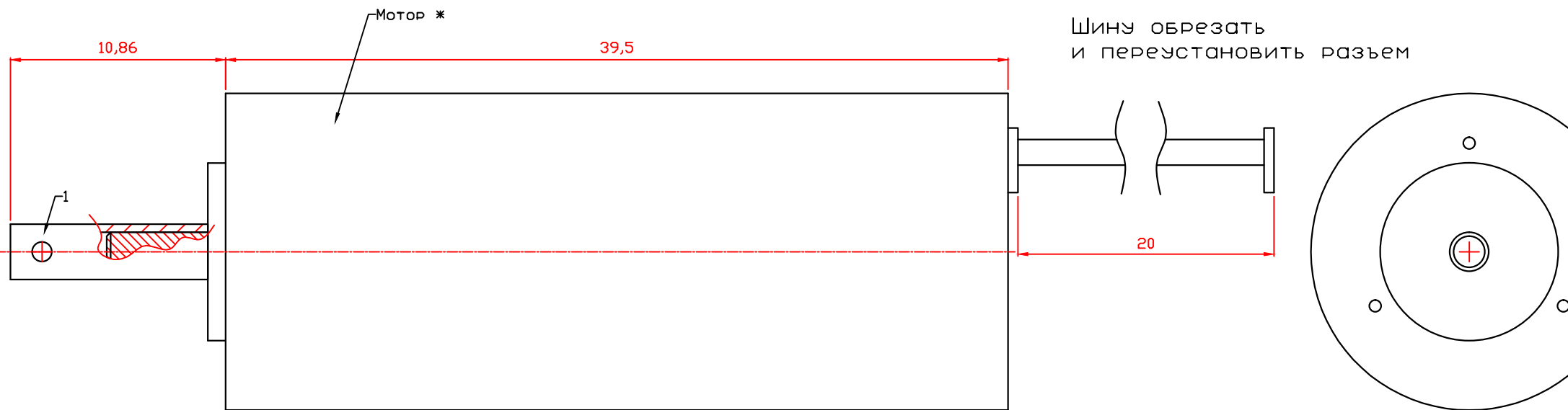


Дюралюминий



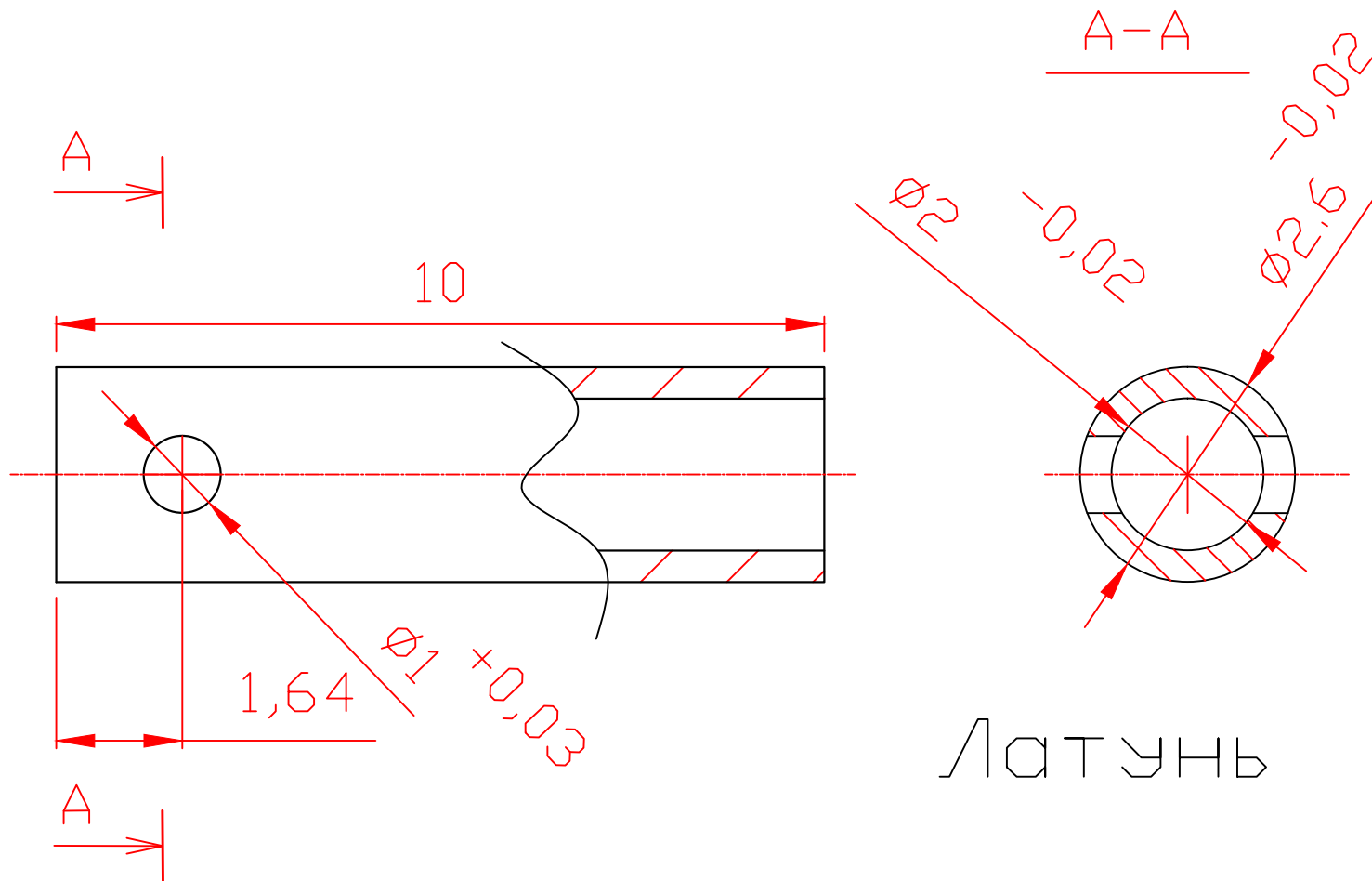
Капролон

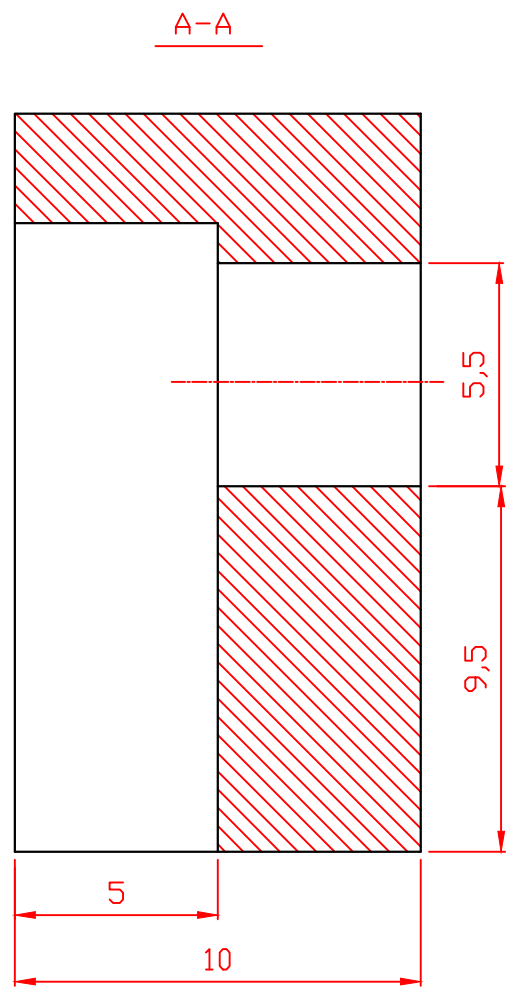
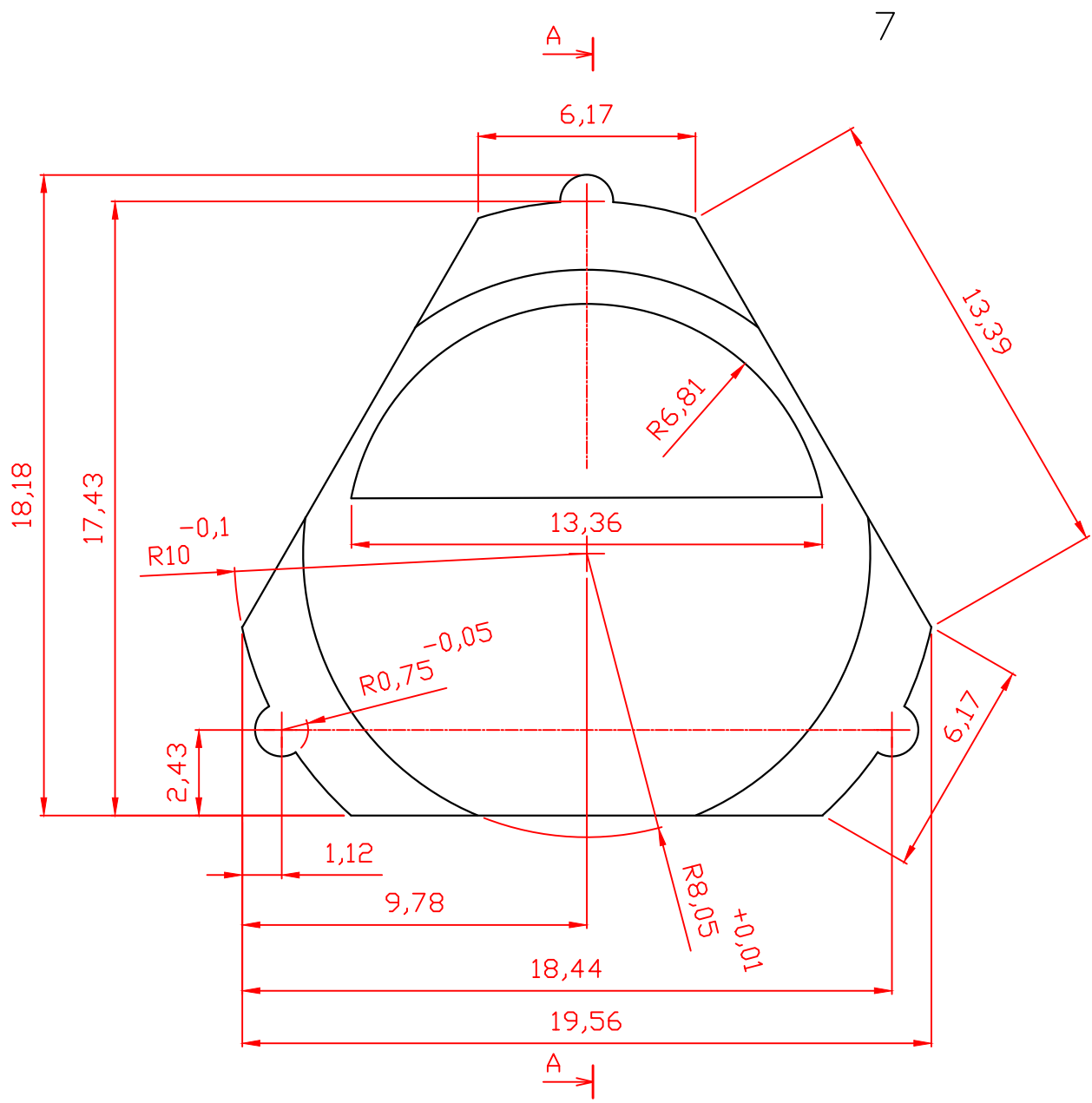
6



Примечание:
*-Покупная позиция

6.1





ДЮРАЛЮМИНИЙ