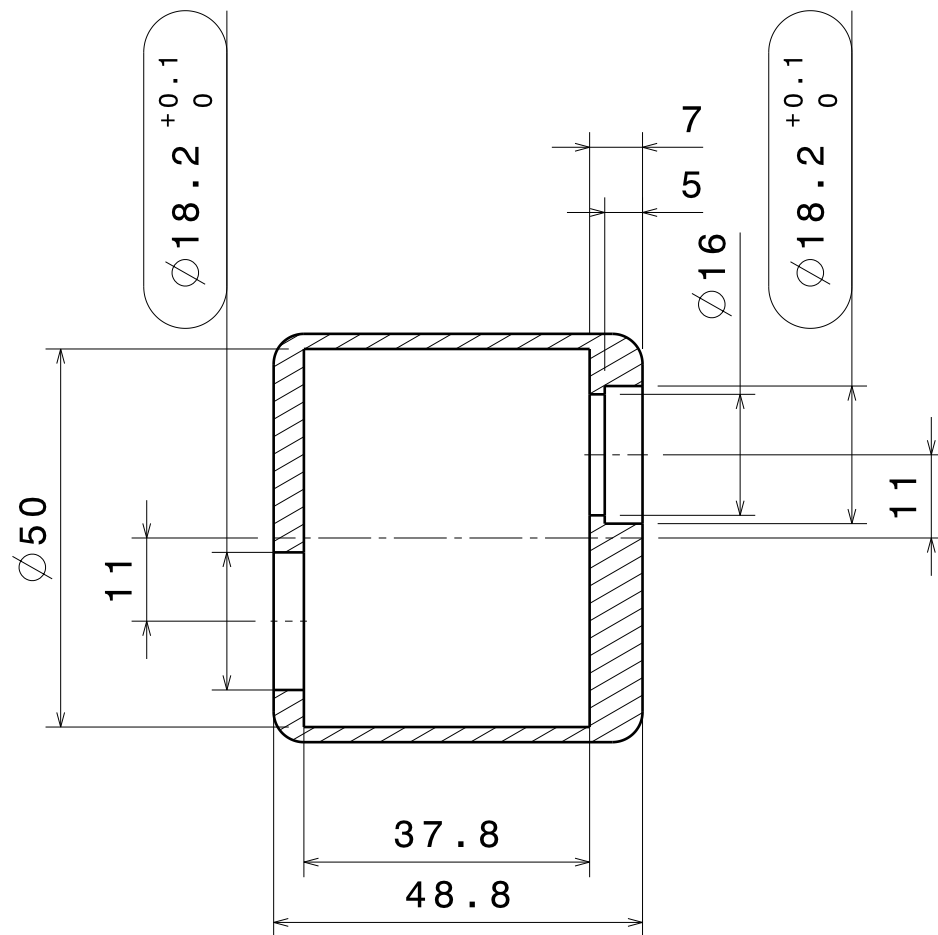
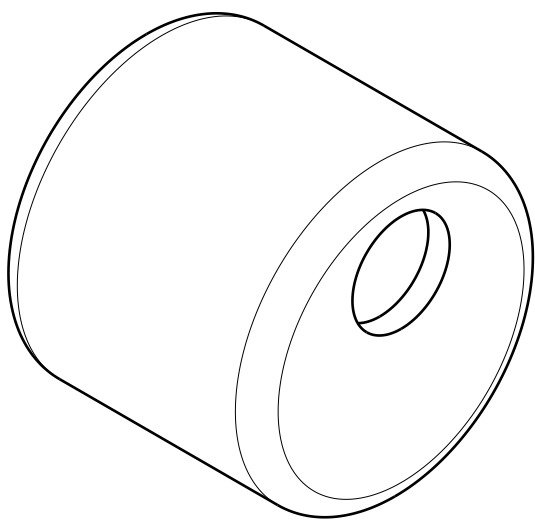


Front view
Scale: 1:1




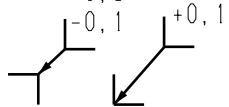
Section view A-A
Scale: 1:1



Isometric view
Scale: 1:1

Kontrollmasse
sowie alle Formtoleranzen, Lage-
toleranzen und Rauhtiefenangaben

control dimensions:
as well as form tolerances,
position tolerances and
surface specifications

2.0	-	SAP Synchronize	18.03.2010	Atanasoe	Atanasoe	
1.0	-	SAP Synchronize	18.03.2010	Atanasoe	Atanasoe	
0.0	-	New Design	18.03.2010	Atanasoe	Atanasoe	
St.mod.	Field	Modification Description		Date	Modified	Checked
ATTENTION: No manual changes in the drawing!		Client - Project -		Client no. will work on: - -		
Surface protection		Shipping info: shipping will be made according to the drawing after the prototype was tested and approved. There will be no modifications without the approval of Contitech Romania		Scale: 1:1		Calculated Weight: 0,091 kg
Free tolerances ISO 2768-mH				Material: AlSi1MgMn (6082)		
E METHOD ISO/R 128				Name:		
Part edges DIN ISO 13715 -0,3 -0,1 +0,1				SILENCER 54x48.8 (DxL) (74.2cmc)		
				Verif. - -		
				Norm - -		
		CONTITECH		Drawing no.: AC 0400.1909.0200		
		FLUID		Replacement for -		
				Pag. 1 / 1		
				DIN A3		